

Town of James Island

Comprehensive Plan



Bill Woolsey
Mayor

Town Council Members

Garrett Milliken, Mayor Pro Tem
Daniel Boles
Cynthia Mignano
Darren Troy Mullinax

Town Planning Commission Members

Bill Lyon, Chairman
Ed Steers, Vice Chair
Deborah Bidwell
Mark Maher
Zennie Quinn

Ashley Kellahan, Town Administrator
Frances Simmons, Town Clerk
Kristen Crane, Planning Director
Flannery Wood, Planner II

Adopted July 9, 2015; 5-Year Review April 15, 2021

The Town of James Island Comprehensive Plan 5-year Review was accomplished during the COVID-19 pandemic, which affected everyone globally. The Planning Commission completed this timely review during an unprecedented time of uncertainty, virtual meetings, and a need to adapt to the circumstances.

Table of Contents

<i>Chapter 1: Introduction and Background</i>	<i>p. 2</i>
<i>Introduction</i>	<i>p. 2</i>
<i>Purpose and Intent</i>	<i>p. 2</i>
<i>Plan Organization</i>	<i>p. 2</i>
<i>Chapter 2: Goals</i>	<i>p. 4</i>
<i>Goal Statements</i>	<i>p. 4</i>
<i>Chapter 3: Comprehensive Plan Elements</i>	<i>p. 6</i>
<i>Chapter 3.1: Land Use Element</i>	<i>p. 6</i>
<i>Chapter 3.2: Economic Development Element</i>	<i>p. 11</i>
<i>Chapter 3.3: Natural Resources Element</i>	<i>p. 14</i>
<i>Chapter 3.4: Cultural Resources Element</i>	<i>p. 20</i>
<i>Chapter 3.5: Population Element</i>	<i>p. 25</i>
<i>Chapter 3.6: Housing Element</i>	<i>p. 30</i>
<i>Chapter 3.7: Transportation Element</i>	<i>p. 33</i>
<i>Chapter 3.8: Community Facilities Element</i>	<i>p. 43</i>
<i>Chapter 3.9: Priority Investment Element</i>	<i>p. 52</i>
<i>Resources and References</i>	<i>p. 54</i>

Special thanks are given to former commissioners Garrett Milliken, Marguerite Neal, Robin Hardin, Ed Lohr, Warren Sloane, Lyndy Palmer, David Bevon and former Councilman Leonard Blank. Thanks are also given to current commissioners Zennie Quinn, Bill Lyon, Ed Steers, Deborah Bidwell and Mark Maher.

Chapter 1: Introduction and Background

Introduction

The Town of James Island Comprehensive Plan Update is the future vision for preservation and development in the Town of James Island (the Town) for the next 10 years. In February of 2014, the Town of James Island planning committee began the comprehensive planning process with a discussion of the requirements of the state Planning Enabling Act of 1994. Previously in 2012, the Land Use and Community Facilities elements were completed as part of the process to establish the Town's Zoning and Land Development Regulations Ordinance. These elements have been updated as part of the process to complete the Town's Comprehensive Plan by completing all required elements.

South Carolina State Law (§6-29-510) requires that comprehensive plans be reviewed at least once every 5 years and updated at least once every 10 years. In 2007, the South Carolina Priority Investment Act (The Act) was passed by The General Assembly to address affordable housing and transportation issues and to create a formal process for inter-jurisdictional coordination. The Act requires that two new elements be included in the Comprehensive Plan, the Transportation Element and the Priority Investment Element. It also expands the Housing Element to require an analysis of local regulatory barriers to the provision of affordable housing and to utilize incentives to encourage development of affordable housing. The primary goal of The Act is to better coordinate the funding of necessary public facilities with available resources and adjacent jurisdictions through implementation strategies.

This Comprehensive Plan represents the original Plan to be reviewed in 5 years and updated in 10 years. The Town's Planning Commission held several workshops to review and refine the elements, goals and strategies for the Comprehensive Plan as part of the monthly meeting process. Each meeting was open to the public. The Town Council held a public hearing prior to adopting this Plan. The 5-Year Review Public Hearing at Town Council occurred on April 15, 2021.

Purpose and Intent

The Town of James Island Comprehensive Plan Update will guide public decision-making affecting the quality of life in the Town through the year 2025. The elements of the Plan articulate goals for the future regarding the location, quality and intensity of land uses, the preservation of natural and cultural resources, economic development, housing availability, and the provision of public facilities. The Plan also establishes strategies or actions to implement the Town's goals.

Plan Organization

This Plan is organized based on the requirements of the South Carolina Local Government Comprehensive Planning Enabling Act of 1994 (the Act), as amended, and contains the nine required Comprehensive Plan elements. Each element includes a purpose and intent

statement, an inventory of existing conditions, a statement of needs and goals, and implementation strategies with time frames.

A goal is a statement of a desired end-state or target and sets the tone for the individual strategies for each element. A strategy is a focused, achievable action the Town or its designated agency could undertake in pursuit of a goal statement.

The nine Comprehensive Plan elements, along with a brief description, are listed below:

1. Land Use Element: Includes an overview of the existing land use and strategies to shape the future of the Town's landscape regarding location, quality, and quantity of land uses.
2. Economic Development Element: Includes a description of the Town's economic environment and strategies for future employment/business development in the Town to support the population.
3. Natural Resources Element: Recognizes the diverse natural features in the Town and includes strategies to preserve and protect them.
4. Cultural Resources Element: Recognizes the rich history and culture of the Town and includes strategies to preserve and protect the Town's historical and cultural assets.
5. Population Element: Includes an inventory of population and demographic data to establish existing conditions and strategies to monitor the needs of future populations.
6. Housing Element: Includes an assessment of the housing conditions and needs in the Town and strategies to ensure adequate and affordable housing availability.
7. Transportation Element: Describes the existing transportation system in the Town and includes strategies to coordinate with area transportation agencies.
8. Community Facilities Element: Inventories existing facilities serving the Town's population and includes strategies to coordinate with service providers to ensure continued quality service provision in the future.
9. Priority Investment Element: Prioritizes the investment of Town resources into the various strategies of the Plan and includes strategies to continue coordination with adjacent jurisdictions and service providers.

Chapter 2: Goals

Goal Statements

The following statements have been carefully crafted to establish specific goals for the various elements of the Plan. These goals are reiterated later in the Plan as part of the policies and capstones for each element.

1. Land Use Element Goal

The Town of James Island will encourage the orderly and environmentally sound development of the land with special consideration to maintaining the suburban character and natural ecosystems of the area.

2. Economic Development Element Goal

Encourage redevelopment to improve current aesthetics and diversity of amenities in the Town's commercial areas.

3. Natural Resources Element Goal

Protect, preserve, and enhance the natural environment by promoting biodiversity and preserving and improving ecosystems.

4. Cultural Resources Element Goal

Promote the preservation and awareness, and management of the island's historic resources and multi-cultural heritage.

5. Population Element Goal

Encourage population growth through annexation to fill in the pockets of land that have not been annexed. This will allow the Town of James Island to have a better-defined service area and more of a sense of community.

6. Housing Element Goal

Encourage high quality, affordable housing for people of all ages, incomes, and physical abilities.

7. Transportation Element Goal

Promote a safe and inclusive transportation network that prioritizes cooperative connectivity, values natural and cultural resources, and is coordinated with suburban land use patterns.

8. Community Facilities Element Goal

Community facilities and services will be provided in an equitable, fiscally responsible manner with adequate levels of service and will be coordinated with surrounding jurisdictions and linked to land use planning and development decisions.

9. Priority Investment Element Goal

Adequate public facilities and services will be prioritized through coordination with adjacent and relevant jurisdictions and agencies and will not harm the Town's suburban residential character or its natural, multi-cultural, and historic resources.

Chapter 3: Comprehensive Plan Elements

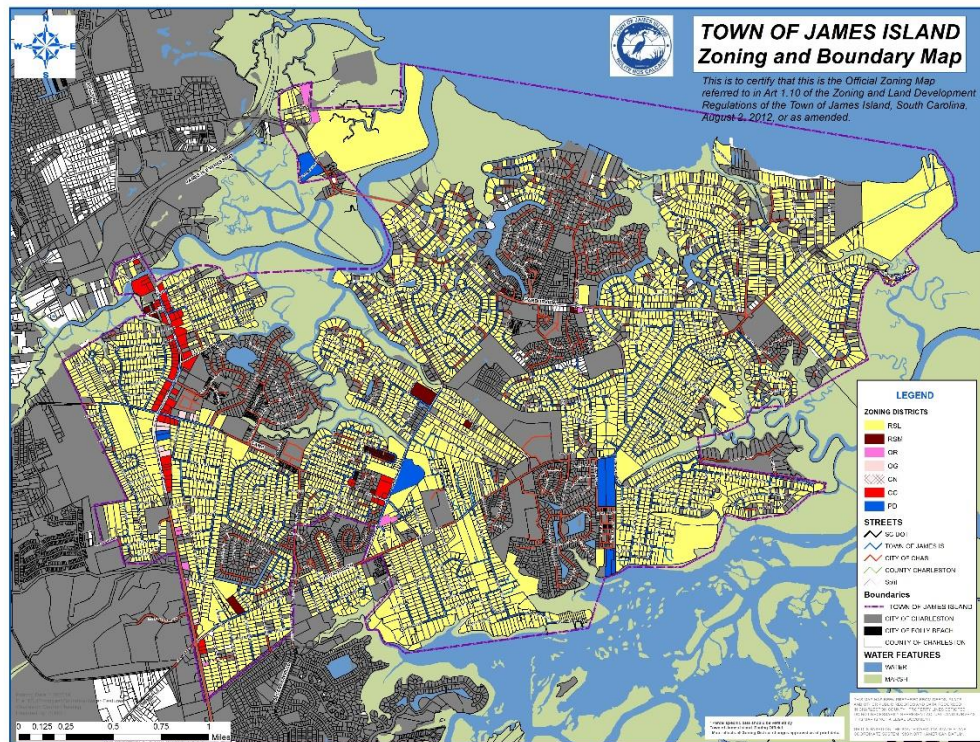
Chapter 3.1: Land Use Element

Land Use Element Overview and Purpose and Intent

The Land Use Element of the Plan deals with the development characteristics of the land. It considers existing and future land use by categories including residential, commercial, industrial, institutional (schools, churches, government facilities, etc.), open space, and undeveloped land. All previously detailed elements influence the land use element. The findings, projections, and conclusions from each of the other Comprehensive Plan elements will influence the amount of land needed for various uses.

The natural environment in which the Town is situated is an important asset which makes James Island a pleasing place in which to live, while at the same time making it attractive for future development. The economic and aesthetic well-being of the entire community is largely dependent upon the maintenance of its ecosystems and suburban setting. This Comprehensive Plan includes strategies to preserve the many desirable characteristics of the Town, while allowing for positive growth patterns.

The purpose of the following land use information, goal, and strategies is to encourage sustainable development¹ practices to allow for growth while preserving the environmental, cultural, historic, and aesthetic integrity of the Town.



(Figure 3.1.1 Town of James Island Zoning Map)

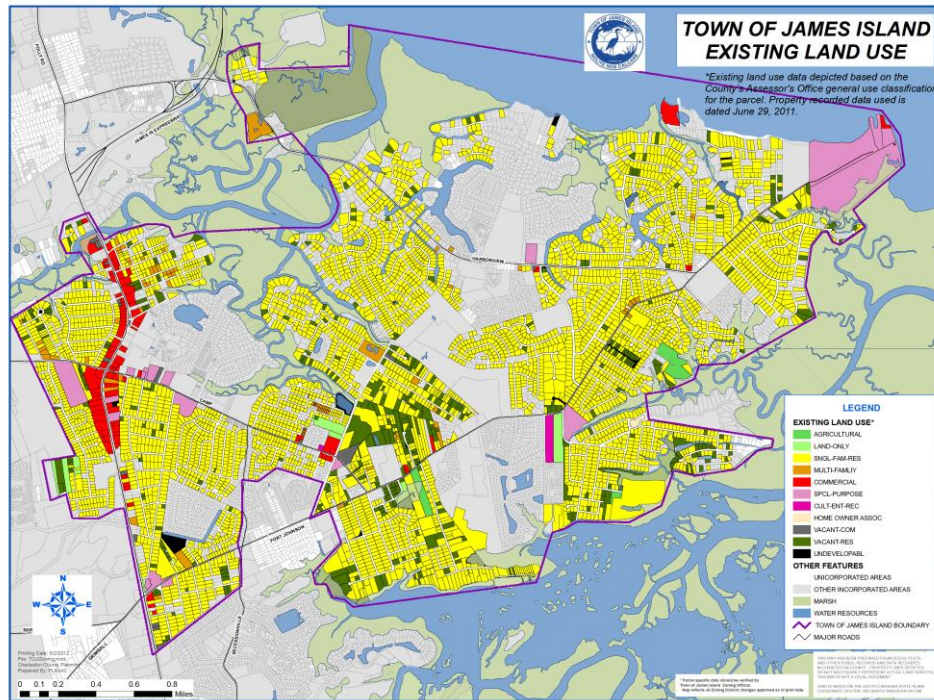
¹ Please see *sustainable development* definition on page (Resources and References).

Land Use Element Background and Inventory of Existing Conditions

Most of the land within the corporate limits of the Town of James Island is currently in residential or commercial uses. The Town has retained its desired suburban residential character through policies encouraging residential and small commercial development. Commercial development across all of James Island serves the needs of the Town's population. Additionally, many of the residents do not work in Town; rather, they commute to the employment centers of Charleston and North Charleston.

As a result, the Town has a suburban character and many scenic views across marshland and tidal creeks. James Island is surrounded by expanses of wetlands and open waters which add to the beauty and ecological function of the area. Cultural and historical resources are also abundant in the Town. Protection of these resources is very important to the Town as evidenced by the efforts of James Island residents to preserve and commemorate many locations and actions that have occurred on the island through the years.

The Town of James Island is bounded by unincorporated Charleston County, the City of Folly Beach, and the City of Charleston. The land uses in these jurisdictions are similar to those in the Town with the majority of land being used for single family residences and commercial activities. Single family residential and supporting commercial uses along Folly Road, Harbor View Road and the Camp Road/Dills Bluff Road intersection are cornerstones of the plan for the Town. The existing commercial uses in the Town's boundary are diverse in nature. One issue that should be addressed is the number of parcels currently in a state of legal nonconforming status that should be rezoned or have a new zoning classification created for the use of those parcels.



(Figure 3.1.2 Town of James Island Existing Land Use Map)

Land Use Element Future Land Use Categories

The following are the future land use categories in the Town of James Island.

Residential

The Residential Future Land Use Category is intended to maintain the Town's low density single family residential character. This area should generally be developed with low residential densities. Incentives to retain the suburban character of the area such as flexible site planning guidelines and conservation design should be provided in the zoning ordinance to preserve open space and protect natural and historic features.

Community Commercial

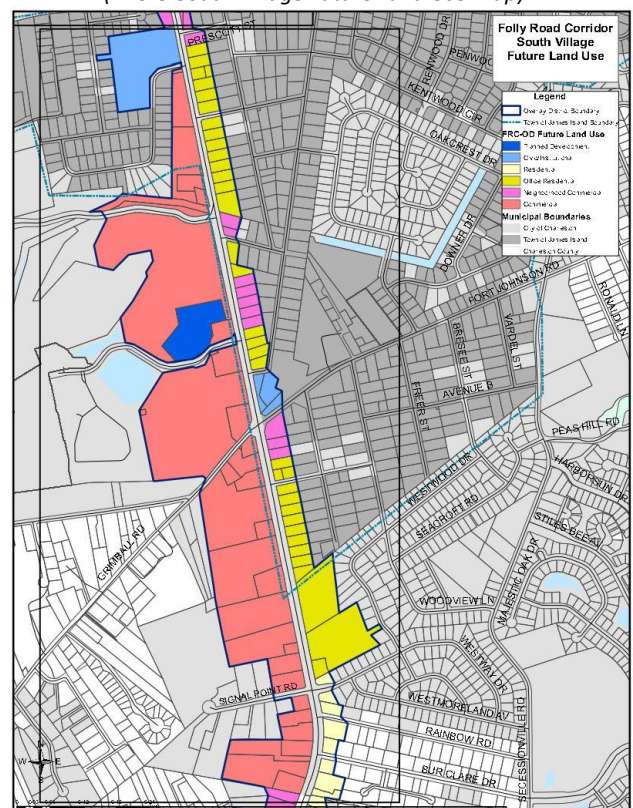
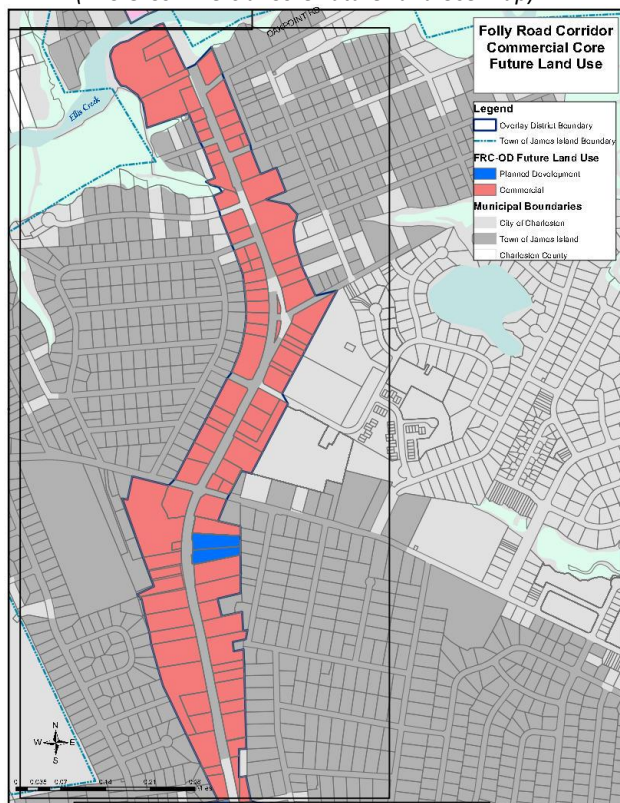
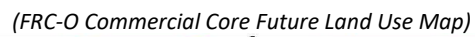
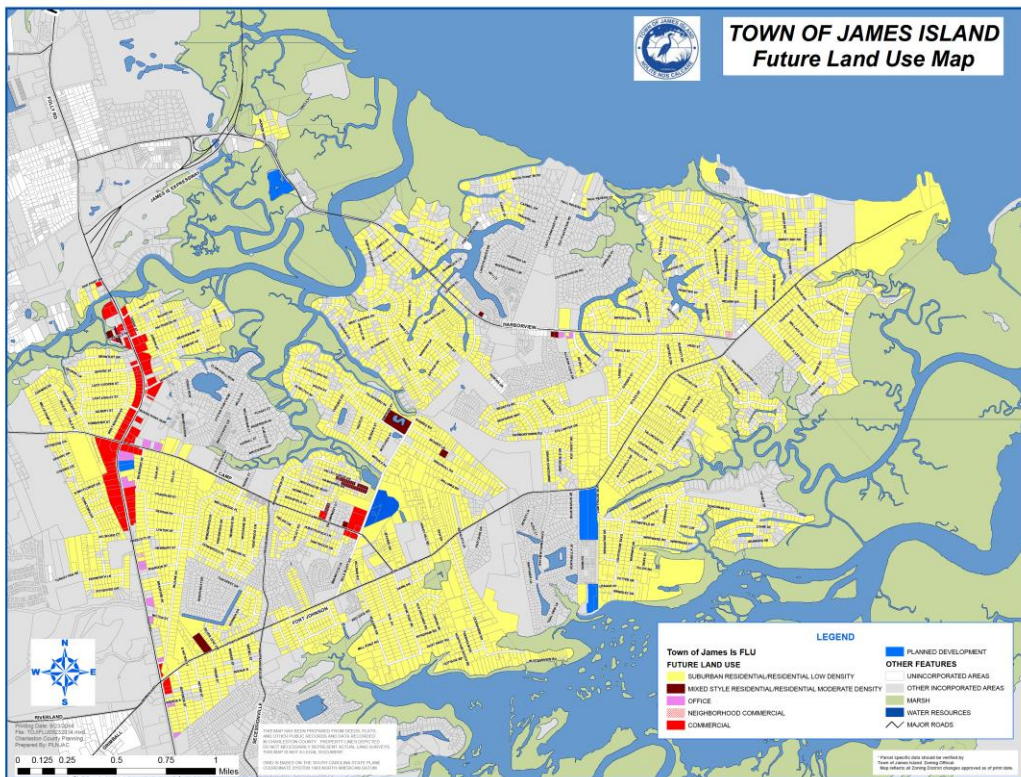
The Community Commercial Future Land Use Category is intended to allow diverse retail and service uses that serve the residential population of the Island, and that do not negatively impact the surrounding community.

Neighborhood Commercial

The Neighborhood Commercial Future Land Use Category is intended to allow office uses and neighborhood oriented commercial uses that serve the residential population of the Town and that do not negatively impact the surrounding community.

Institutional/Special Purpose

The Institutional Future Land Use Category is intended to allow churches, schools, community and governmental centers, recreation, and other uses that comprise the Town's sense of community.



Land Use Element Needs

Land Use element needs include, but are not limited to the following:

- Preserving the suburban character of the area;
- Preserving the natural, multi-cultural, historic, and aesthetic integrity of the Town; and
- Encouraging sensitive and sustainable development practices.

Land Use Element Goal

The Town of James Island will encourage the orderly and environmentally sound development of the land with special consideration to maintaining the suburban character and natural ecosystems of the area.

Land Use Element Strategies and Time Frames

The following strategic actions should be undertaken by the Town in support of the purpose and intent of the Land Use Element of the Comprehensive Plan. These implementation strategies will be reviewed a minimum of every five years and updated every ten years from the date of adoption of this Plan.

- LU 1. Protect and enhance the environmental quality of the Town's natural features.
- LU 2. Preserve and enhance the multi-cultural, historic and archaeological assets of the Town.
- LU 3. Maintain the low density, single family residential character of the Town.
- LU 4. Implement sustainable and flexible development guidelines and integrate development with growth to maintain the suburban character of the Town.
- LU 5. Encourage commercial structures that are in character with and maintain the suburban nature of the area.
- LU 6. Identify parcels currently in use as a different type than the current zoning district allows (existing nonconforming) and examine rezoning or developing a new district to allow the existing use.

Chapter 3.2: Economic Development Element

Economic Development Element Overview and Purpose and Intent

The Economic Development Element of the Comprehensive Plan contains information on the number and characteristics of the labor force, where people who live in the community work and available employment characteristics and trends. The purpose and intent of this element is to provide strategies to integrate economic development while maintaining the suburban residential character of the Town.

Economic Development Element Background and Inventory of Existing Conditions

Historically, James Island was inhabited by Native American wandering tribes who made their living by hunting. James Town was designated a “colony” of 12,000 acres in the late 17th century and settlers were granted half-acre lots in the town with ten-acre “planting lots” which were located adjacent to the town as well as several larger plantation tracts laid out for various settlers of the area. By this time, settlements were occurring primarily along navigable waterways. However, the size of the island garnered use for roadways with “the King’s Highway” (Riverland Drive) and “Drake’s Highway” (section of Secessionville Rd from Camp Rd to Ft. Johnson Rd) as the earliest known travel ways.

An important economic activity during the early colonial period included the raising of livestock for beef and pork which was salted and shipped to the West Indies. During colonial times, growing indigo was fairly common and rice was speculated to be grown on the island as well. The plantation economy was based on enslaved labor, forced from Africa and used for their agricultural expertise. It is believed that during the colonial period, the majority of the population on James Island was black, with the black inhabitants bringing their African cultural heritage along with skills of cattle management, rice cultivation techniques, boating, fishing, hunting, leatherworking, pottery-making, basketry, woodworking, metal-working, weaving and herbal medicine to the islands.

A shipyard operating from c.1742 to c.1772 was an industrial economic contributor to the Island with the largest vessel of record built being the Charming Nancy, which was 130 tons and built in 1752. Because boats were the principal means of transportation, facilitating boat traffic between Charles Town and the islands was a necessity and the opening of the Wappoo Cut during the colonial period gave the Island’s economy a boost. The economy at this time was largely water-based, due to the dependency on waterways for travel, trade and food.

After the economic depression of the Revolution had passed, cotton became the major cash crop of the Sea Islands because “Sea Island Cotton” had a longer fiber and was more profitable than its inland counterpart. The emancipation of enslaved people had effects on labor and economy, resulting in the formation of the James Island Agricultural Society in 1872 to coordinate labor management policies. Due to insect and diseases, mainly the boll weevil, cotton ceased to be the cash crop that it was by the 20th century. During this time, the growing of vegetables for market (truck farming), dairy farms, raising beef cattle and orange orchards were also economic contributors to James Island.

Transportation improvements in the early to middle 1900's included the opening of the John F. Limehouse Memorial Bridge, the Wappoo Bridge and the Stono River Bridge, as well as the creation of a bus line. These improvements helped foster the rise of suburbanization. The eventual decline of farming and dairy operations on the island increased the pace of development.

Many landowners, who had been growing tomatoes as part of their farms, turned more toward real estate development in the 1950s, 60, and 70's. By the 1980's James Island was a well-formed suburban community. The economic hub was, and continues to be, the Folly Road Corridor. Folly Road serves as the main access route through the island and leads to Folly Beach along the Atlantic Ocean, which is a popular destination.

Many of the businesses along Folly Road cater to the needs of tourists traveling to the beach as well as the suburban community on the island. Most of these businesses are service oriented, including grocery stores, fast food restaurants, convenience stores, and neighborhood service activities. The same holds true for other business areas on the island such as Maybank Highway, Harborview Road, and the Camp Road and Dills Bluff Road intersection.

Current Business Environment

There are a high number of businesses along Folly Road to employ residents, but most businesses have less than 50 employees. The Town has approximately 755 Business Licenses registered for Fiscal Year 2019-2020. About 120 of these licenses are for "brick and mortar" businesses. 408 licenses are for contractors, some of which operate as home occupations. Small business entrepreneurship is a major factor in the Town's economic cycle.

The Town collected approximately \$370,000 in business license revenue for fiscal year 2019/2020, but unfortunately is only anticipating \$310,000 in revenue for fiscal year 2020/2021. While the Town typically sees a modest annual increase in business license revenue (around 3%), the COVID-19 pandemic will have an impact on all Town revenues. Given that the commercial area on James Island is currently built-out, added revenue is heavily dependent on the economy and not growth of new commercial areas. Future growth of business license revenue will depend greatly upon redevelopment of existing commercial lots.

Conclusions

James Island has existed as a suburban, primarily residential, community for the past 50 years. Economic activities on the island reflect this setting. The land use pattern on the island has largely been determined as there is not much undeveloped land in the area, and what is undeveloped is largely expected to be residential in nature. The future of economic development in the Town must take this setting into account.

Economic Development Element Needs

Economic Development needs include, but are not limited to the following:

- Identify economic indicators along with census information to better understand the variables affecting economic development in the Town; and
- Identify existing commercial corridors and investigate developing planning techniques to assist redevelopment efforts to improve Town aesthetics; and
- Identify appropriate future commercial areas and/or uses that could contribute to the local economy and serve the residents of the Town.

Economic Development Element Goal

Encourage redevelopment to improve current aesthetics and diversity of amenities in the Town's commercial areas.

Economic Development Element Strategies and Time Frames

The Town should undertake the following strategic actions in support of the Goal of this Plan. These implementation strategies will be reviewed a minimum of every five years and updated every ten years from the date of adoption of this Plan.

- ED 1. Develop a list of employment codes suitable for attracting opportunities to the Town in anticipation of redevelopment opportunities in a suburban setting.
- ED 2. Ensure all new commercial development is compatible with the aesthetic style and character of the desired pattern of buildings and structures in the Town of James Island.
- ED 3. Continue to encourage positive redevelopment/development by offering incentives such as nonconforming signage reimbursements and buffer reductions for multi-use path placement, transit facilities, etc.
- ED 4. Encourage a variety of diverse commercial uses that will benefit the Town as a whole.

Chapter 3.3: Natural Resources Element

Natural Resources Element Overview and Purpose and Intent

The Town's natural environment is an important asset which makes James Island an aesthetically pleasing and ecologically functional place in which to live, work and play. The natural setting plays an important role in the way of life for many residents who enjoy fishing, boating and the many scenic vistas throughout the island.

The purpose and intent of the Natural Resources Element is to promote protection of the Town's natural resources, to sustain natural environments, habitats, and wildlife, to ensure that development does not have a negative impact on the environment, and to promote sustainable development² practices that maintain or improve ecosystems.

Natural Resources Element Background and Inventory of Existing Conditions

Climate

One of the best natural features of the James Island area is the climate. Winters are generally mild. Spring, summer, and fall are all usually well suited to outdoor activities and outdoor plant growth. The average annual temperature is 65 degrees Fahrenheit. The average temperature during January is 50 degrees Fahrenheit, while the average temperature in July is 80 degrees Fahrenheit. Precipitation averages approximately 48 inches per year. There are approximately 101 clear days, 151 cloudy days, and 113 partly cloudy days. The average date for the first frost is December 10, with the average date for the last frost being February 19.

There is a peak of rainfall in the summer months with the occurrence of afternoon thunderstorms. The greatest amount of rainfall usually occurs in July with an average of 7.7 inches for that month. Rainfall is usually at its minimum in November with an average of 2.1 inches for that month.

One of the most serious weather concerns to James Island is the occurrence of tropical storms and hurricanes. Peak hurricane season lasts from late summer to early fall. Hurricanes bring threats of high winds, storm surge, flooding, and strong wave action, resulting in damaged infrastructure and interruptions in connectivity and public utilities. The last major hurricane to affect Charleston County was Hugo, which made landfall in September 1989. Building codes and ordinances to improve building quality help reduce storm damage from hurricanes and tropical storms.

Seismic Activity

One unusual feature of Charleston County's geology is its high level of seismic activity. The National Building Code has designated Charleston County as a zone of high susceptibility to earthquakes. The earthquake centered at Middleton Place on August 31, 1886 is estimated to have been a higher intensity than any other recorded quake east of the Mississippi River.

² Please see *sustainable development* definition on page (Resources and References).

Limited seismic activity centered in the North Charleston/ Summerville area continues to this day. Unlike those in other areas, the Charleston earthquakes are not associated with

well-defined fault lines that can be mapped. The causes of the Charleston earthquakes are unknown. Because of the potential for these types of activities, it is important that building codes are used to reduce loss of life and structural damage as much as possible.

Soils, Geology, Ground Water and Drainage

The soils and geology of James Island are consistent with those typically found in the Atlantic Coastal Plain. The County is mostly level but in places is slightly undulating. Elevations range from sea level to 70 feet. Most of the area within the town limits of James Island is close to sea level. The region is inundated by tidal streams that provide natural outlets for drainage. Unconsolidated, water-layered deposits of sands and clays, 6 to 20 feet in thickness, are underlain by thick beds of soft marl. Fine-textured sediments in the tidal marshes are of recent origin. New deposits are being aided by the action of tidal waters. James Island is classified as part of the Tidewater Area of Coastal South Carolina (SCDNR, 1997) with soils associated with the Bohicket – Capers and Kiawah – Foxworth – Yonges associations of soil types. These soils have the characteristics of loamy topsoil layers rich in organic matter with lower layers or highland layers of a mix of sand and clay. These soils are typical of those that experience flooding and sedimentary deposits on a regular basis making them good locations for agriculture uses (National Oceanographic and Atmospheric Administration, 2011). The Town can take advantage of James Island's sandy soil by utilizing building techniques (such as pervious materials) to help promote positive drainage.

James Island has a Floridian aquifer type at the layer under the surficial aquifer, which is the water table aquifer which is sandy and less than 40 feet thick. In Charleston County the depth to the ground water table is often very shallow (32.9% of the land area in Charleston County has a ground water table elevation of between 0 and 15" below grade, and an additional 22.3% of the land has a ground water table elevation of 0" below grade). Ground water is generally close to the surface on James Island, especially close to the wetlands, salt marsh areas and rivers. Monitoring wells are generally shallow as well, staying above whatever limestone layers are encountered (Waters, 2003).

James Island is located in the Charleston Harbor/Stono River Watershed Basin and consists primarily of the Charleston Harbor and its tributaries, and the Stono River with its tributaries from Wappoo Creek to the Atlantic Ocean. This segment of the Stono River, classified SFH (Shell Fish Harvesting), accepts drainage from James Island Creek or Ellis Creek (Simpson Creek, Wolfpit Run), Holland Island Creek, and Green Creek. The Folly River (Folly Creek, Oak Island Creek, Robbins Creek, King Flats Creek, Cutoff Reach, Cole Creek), classified SFH, drains into the mouth of the Stono River. Robbins Creek and King Flats Creek are also connected to the Stono River through Green Creek. Lighthouse Creek (Block Island Creek, Rat Island Creek, Ft. Johnson Creek, First Sister Creek, Second Sister Creek) flows between Folly Island and Morris Island and through Lighthouse Inlet to the Atlantic Ocean. Ft. Johnson Creek connects the Lighthouse Creek drainage to Clark Sound (Seaside Creek, Secessionville Creek). The sound drains into Charleston Harbor through Schooner Creek near Fort Sumter.

The Hydrography is that of a coastal interior island with salt marsh, tidal creeks, brackish rivers and estuaries and freshwater wetlands in the interior. Protected by the barrier islands of Morris Island and Folly Beach from the Atlantic Ocean, James Island does not experience ocean wave action erosion.

Vegetation

The tidal waterways near James Island have a great deal of influence on regional vegetation. Most of the salt water tolerant vegetation is found in tidal marshes, which comprise about 20% of Charleston County. Common types of marsh grasses are spartina and smooth cordgrass.

Numerous varieties of oak trees, hickory trees, and other hardwood trees are also indigenous. The state tree, the cabbage palmetto, occurs naturally along the coast and has been introduced extensively throughout the area.

Since the fall of 2014, the Town of has celebrated South Carolina Arbor Day on the first Friday of December with James Island Pride. In December 2020, the Town formalized their commitment to tree protection by becoming a designated Tree City USA with the National Arbor Day Foundation, as well as enacting a Trees Advisory Council, which is part of the Town's Environment and Beautification Committee. Cataloging and surveying the island's urban tree canopy via a software program called geothinQ, is one of many major projects that the Tree Council will embark on in 2021, with the help of several interns, staff and an arborist.

Wetlands

Because of the tremendous ecological benefit of wetlands, extreme care must be taken to insure their continued existence. Wetlands hold water, purify water, create habitat for many types of animals and insects, and act as flood buffers from surrounding properties. Property located along rivers and streams is most likely to be classified as wetland. If there is any indication that a property is a wetland, all activity should stop until an official determination can be made by a qualified person or agency. The US Army Corps of Engineers provides wetlands determinations for South Carolina.

Flood Plains

Due to the low-lying nature of James Island, floodplains, or areas that absorb water during storm conditions, are abundant and intersect with development. Floodplains are categorized into zones and each zone has its own risk. For example, AE is high risk and VE is high risk with wave action. FEMA provides maps based on storm surge conditions and hydraulic modeling of watersheds during a hurricane and outlines the special flood hazard area (SFHA) for a 1% annual chance event and establishes base flood elevations. These storm impacts are more severe and altering to the community due to climate change. Under the 2021 FEMA flood maps, 56% of the Town lies within a floodplain. This percentage is based off historic conditions only, and future conditions are not taken into consideration for this mapping. It is in the Town's best interest to evaluate use of a property based on risk level for flooding to further resilience and longevity of the community.

Endangered Species

The only federally endangered species (listed as endangered under the Endangered Species Act or ESA) that is tightly associated with James Island is the Wood Stork. A small colony of Wood Storks nest (the past few years in spring) at the Dill Sanctuary near Stono River. Wood Storks are also fairly common, particularly in summer and early fall, in and near marshes, tidal creeks and ponds on/within and adjacent to James Island. Wood Storks often roost in trees near tidal marsh and tidal waterways.

Within Charleston Harbor, and particularly in large tidal waterways within and adjacent to James Island, there is a possibility for at least the occasional occurrence of four species listed under the ESA. Florida Manatee (both federally and state of SC endangered) is seen in such areas, mostly in summer. Also, Loggerhead Sea Turtle (both federally and state of SC endangered) occasionally enters Charleston Harbor and even Stono River. Both Shortnose Sturgeon and Atlantic Sturgeon (both listed as endangered under the ESA) occur in Charleston Harbor, and both (particularly Atlantic Sturgeon) could occasionally use Stono River and larger creeks and waterways within or adjacent to James Island.

Bald Eagles, though no longer listed under the ESA, are federally protected under the Bald and Golden Eagle Protection Act. The Bald Eagle is also listed as threatened by the state of SC. The only confirmed Bald Eagle nest on James Island is near the Bayview soccer fields southwest of James Island Charter High School. There have been many other Bald Eagle sightings on James Island and some are in consistent locations during the breeding season of October – May 15th.

Several species that at least pass over (through) James Island while foraging or migrating are listed as either endangered or threatened by the state of SC. Least Tern (state of SC threatened) does not nest on James Island, but it commonly forages for small fish in waters (mostly estuaries) within or adjacent to James Island. American Swallow-tailed Kite (state of SC endangered) also does not nest on James Island, but it likely passes through during migration.

Species that are listed as threatened or endangered by the state of SC are protected from any type of harassment, particularly activities that may disturb nesting or breeding. Such species are also obviously protected from any activity that may kill or injure these species. Protected species require a permit from the state of SC for any type of research that might include handling or disturbing the animals.

Billy McCord (Department of Natural Resources, 10/28/2014)

Charlotte Hope (Department of Natural Resources, 7/7/2020)

Katherine Faith (Charleston County Floodplain Management Coordinator, 9/28/2020)

Natural Resources Element Needs

Natural Resources Element needs include, but are not limited to the following:

- Ensuring that development does not have a negative impact on the environment; and
- Promoting sustainable development practices as defined by the World Commission on Environment and Development.

Natural Resources Element Goal

Protect, preserve, and enhance the natural environment by promoting biodiversity and preserving and improving ecosystems.

Natural Resources Element Strategies and Time Frames

The Town should undertake the following strategic actions in support of the Goals of this Plan. These implementation strategies will be reviewed a minimum of every five years and updated every ten years from the date of adoption of this Plan.

- NR 1. Continue to encourage sustainable development practices to protect the environment from negative impacts of development.
- NR 2. Continue to work to improve the quality of James Island waterways by maintaining the work on the TMDL (Total Maximum Daily Load) assessment with the City of Charleston, Charleston County, and DHEC, as well as continuing efforts with the James Island Public Service District to establish Pet Waste Stations in local neighborhoods.
- NR 3. Continue to work to reduce the amount of litter in Town limits.
- NR 4. Continue to work with the appropriate agencies to increase safety on the Intracoastal Waterway and other rivers and creeks.
- NR 5. Continue to manage defined trees through the tree preservation ordinance.
- NR 6. Continue to encourage retention of native vegetation in new developments to reduce the amount of polluted run-off, reduce the need for water, and maintain the suburban character of the Town, in coordination with the Town's newly adopted Supplemental Stormwater Design Standards (2020) that provide for runoff mitigation by recommending practices such as rain gardens, rain barrels, infiltration trenches, and additional vegetative buffering.
- NR 7. Continue to monitor development in flood plains and adjacent to wetland areas to lessen the potential damage to property and the natural system that could result from natural disasters. Ensure that development activities on properties containing wetlands are developed according to regulations.
- NR 8. Continue to strongly encourage utilization of pervious materials in development and redevelopment activities with the use of pervious asphalt, pervious concrete, brick pavers, etc.

Chapter 3.4: Cultural Resources Element

Cultural Resources Element Overview and Purpose and Intent

The Town of James Island is rich in both history and cultural resources and, therefore, recognizes the importance of history and natural beauty to the quality of life in the Town. The purpose and intent of the Cultural Resources Element is to ensure the proper management of the Town's significant historic resources and cultural heritage.

Cultural Resources Element Background and Inventory of Existing Conditions

Area History

In the prehistoric era, James Island was inhabited by wandering tribes of Native Americans who made their living by hunting. Their homes probably were temporary, crude shelters of animal hides or makeshift lean-tos. When the game in any area was depleted, they moved on to new hunting grounds. By the time the Native American inhabitants of James Island came into contact with Europeans in the first part of the seventeenth century they were settled agrarian tribes.

The Stono Indians and the European settlers appear to have had a brief period of good relations. But trouble arose because the Stono, apparently not understanding the concept of domesticated animals, treated the settlers' hogs, turkeys, and geese as fair game, and the settlers retaliated by killing some of the Indians. This led to a rebellion in 1674 which was subsequently put down within the next decade and the Stono were weakened as a result. The 1707 Act for Regulating the Indian Trade contains the last documented reference to the Stono tribe.

Charles Towne was the first permanent European settlement in South Carolina, founded in 1670. In December 1671 the Council of the Province ordered a town to be established on James Island. The town was named for James, the Duke of York, brother and heir of Charles II. The town survived for a short time, last showing up in contemporaneous records in 1686. By this time James Island had scattered settlements located primarily along navigable waterways. The name "James Island" was being used in public documents.

In the early 1700s more activity came to James Island. A legislative act creating highways led to the establishment of the "King's Highway" along part of present day Riverland Drive, and "Drake's Highway" along present day Secessionville Road from Camp Road to Fort Johnson Road. As a result of an invasion that took place during the War of the Spanish Succession, in which a French squadron loaded with Spaniards and Indians attacked James Island, a fort was constructed in 1709 at Windmill Point to guard the entrance to Charles Towne harbor. It was named Fort Johnson after Sir Nathaniel Johnson, the Governor of the Province from 1703 to 1709.

The raising of livestock was important to the colonial economy before the development of successful cash crops. The major cash crop for planters on James Island was indigo, which

was used to produce a beautiful blue dye used by England's developing textile industry. There was also a shipyard operating on James Island during the 1700s. It was during this time that Proprietary rule was brought to an end and South Carolina became a royal colony. The Province was divided into parishes and James Island became a part of Saint Andrew's Parish.

Following an economic downturn coinciding with the Revolutionary War years, prosperity returned to James Island in the 1790's due to the development of Sea Island cotton. Also, Belle-Vue, an establishment containing a rice mill, sawmill, and cotton gin, was in operation from 1821 until the Civil War. Several summer villages also appeared as planters sought a respite from malaria and yellow fever.

In the 1820's tensions began to rise between the North and South over tariffs, slavery, and states' rights. By 1860 South Carolina had seceded from the Union. Fort Johnson was held by rebel forces while Federal forces still occupied Fort Sumter in Charleston Harbor. On April 12, 1861 shells were fired upon Fort Sumter, signifying the start of the Civil War. Federal forces quickly gained control of Port Royal, Beaufort, and Folly Island. In order to protect the approaches to Charleston, Confederate forces constructed defensive fortifications throughout James Island. Engagements took place on James Island, particularly along the Stono River and in the Secessionville area.

Emancipation occurred following the end of the Civil War which brought a change to the labor system on James Island. The Freedman's Bureau worked to negotiate contracts between the planters and groups of wage-earning workers. By 1870 the tenant farm system was in place. Landless black farmers preferred tenancy because it enabled them to be free from direct white supervision, and gave them the hope of accumulating capital with which to buy their own land. This system resulted in the division of great plantations into small farms. Sea Island cotton continued to be of great importance and was improved upon with the development of "Rivers Cotton" or "Centerville Cotton" which was resistant to wilt diseases. In 1917 the boll weevil was observed on the Sea Islands and within a few years Sea Island cotton had vanished.

Truck farming (the growing of vegetables for market) became an important aspect in the island way of life. This began to decline in the 1920's when changing demographics lead to a labor shortage. Also, Lawton Plantation had become the largest dairy in the Charleston area. Beef cattle were also raised on the island. Eventually a move toward suburbanization began. Wappoo Hall and Riverland Terrace were first laid out in the 1920s.

World War II brought an expansion of suburbanization as the region began a buildup in support of the war effort. Bridges were in place that connected James Island to Folly Island and the mainland in West Ashley. More land was converted to residential use and major roads were paved. The influx of more residents and development has continued to the turn of the century, converting James Island from a rural agrarian focused area to a largely suburbanized region.

One community that has persevered through all the changes that have occurred on James Island is the Gullah-Geechee way of life that has abided with the descendants of former slaves throughout the coastline of South Carolina, Georgia and northern Florida. While suburbanization has had an impact on the fabric of this culture, there has been a revived appreciation of the customs and language among the younger generation of island inhabitants.

Source: James Island and Johns Island Historical Survey. Preservation Consultants, 1989

Historic Sites

Because of the area's long history, James Island contains a number of sites of historic interest. The sites below are identified in the 2019 Publication of the Historic Sites of James Island Booklet produced by the Town's History Council.

Individual National Register Listings on James Island:

- Fort Pemberton
- Fort Johnson Powder Magazine
- Unnamed Beach Battery at Fort Johnson
- Marshlands Plantation House
- Stiles Point Plantation
- McLeod Plantation

Secessionville National Register Historic District:

- Fort Lamar and Union Soldiers Grave Site
- Seabrook-Freer House
- William B. Seabrook House
- Elias Rivers House

Civil War Defenses of Charleston National Register Thematic Resources Listing:

- Fort Pemberton
- Unnamed Beach Battery at Fort Johnson
- Fort Lamar
- Battery #1, James Island Siege Line
- Unnamed Battery #1
- Unnamed Battery #2
- Historic Battery #5
- Fort Pringle
- Battery Leroy
- Battery Tynes
- Battery Cheves

Other historical sites of interest:

- Shell Ring and Midden in the Lighthouse Point Neighborhood
- Stiles-Hinson House
- Cuthbert-Heyward House

- Battery Haskell
- Riverland Terrace Neighborhood and Avenue of Oaks
- Elliot Constantine House
- James Island Presbyterian Church
- Saint James Episcopal Church
- First Baptist Church of James Island
- Saint James Presbyterian Church
- Payne RMUE Church
- Grimball Cemetery
- Sol Legare
- Grimball Farms
- Seashore Farmers Lodge
- Mosquito Beach
- W. Gresham Meggett School

A roadside historical marker has been erected at Pinckney Park to commemorate Simeon Pinckney who was born a slave and then later went on to enlist in the U.S. Colored Infantry during the Civil War. After the Civil War ended, Pinckney settled on James Island and purchased 20 acres of land, a portion of which the Town's current Pinckney Park is located. , A second roadside historical marker has been erected on Dills Bluff Road to commemorate the Battle of Dills Bluff, which was the last engagement in SC during the American Revolution in 1782.

The Town of James Island History Commission has published the "Historic Sites of James Island" guidebook that is available to the public online and in print.

Cultural Resources Element Needs

Cultural Resources Element needs include, but are not limited to the following:

- Preserving the Town's significant historic resources and cultural heritage; and
- Documenting more of the Island's history and historic resources.

Cultural Resources Element Goal

Promote the preservation, awareness and management of the island's historic resources and multi-cultural heritage.

Cultural Resources Element Strategies and Time Frames

The Town should undertake the following strategic actions in support of the Goals of this Plan. These implementation strategies will be reviewed a minimum of every five years and updated every ten years from the date of adoption of this Plan.

- CR 1. Support efforts to identify and document the Island's cultural resources and history by supporting the History Commission's efforts to erect more historical roadside markers.
- CR 2. Monitor inventories and studies conducted by other agencies to identify new or recently discovered historic or cultural resources.
- CR 3. Support efforts to preserve and restore important community buildings, sites, districts and landscapes.
- CR 4. Encourage and support the efforts of nonprofit groups to promote the Island's history and culture by continuing such efforts as creating digital resources for maps and tours via smartphone.
- CR 5. Support the establishment and subsequent continuing success of the new James Island Arts and Cultural Center located at 1248 Camp Road.

Chapter 3.5: Population Element

will be updated following the release of new census data

Population Element Overview and Purpose and Intent

The Population Element of the Comprehensive Plan identifies the demographics of the current and future population of the Town. This element typically includes past demographic trends, existing conditions, and future projections regarding the number, size, and characteristics of households; educational levels and trends; income characteristics and trends; race; sex; age and other demographic information.

The purpose and intent of the population data contained in this element is to identify future service and land use needs of the population which can be addressed through this Comprehensive Plan update and to help guide policy decisions.

Population Element Background and Inventory of Existing Conditions

The population data contained in this element is derived from the 2000 and 2010 Census, the most recent Census data available at the time of this update. One problem due to the timing of the Town's incorporation is that Census information was not collected at the level of the Town's jurisdictional boundary. Census Tracts that included any of the Town's parcels were identified and the population is included. Information from the 2010 Census was able to be determined at the Census Block level, which more closely aligns with the Town's jurisdictional boundary. The same level of information was not available from the 2000 Census. Complete population and demographic information will not be available until the 2020 Census is complete. That information will be available to be included in the next Comprehensive Plan ten-year update.

Population

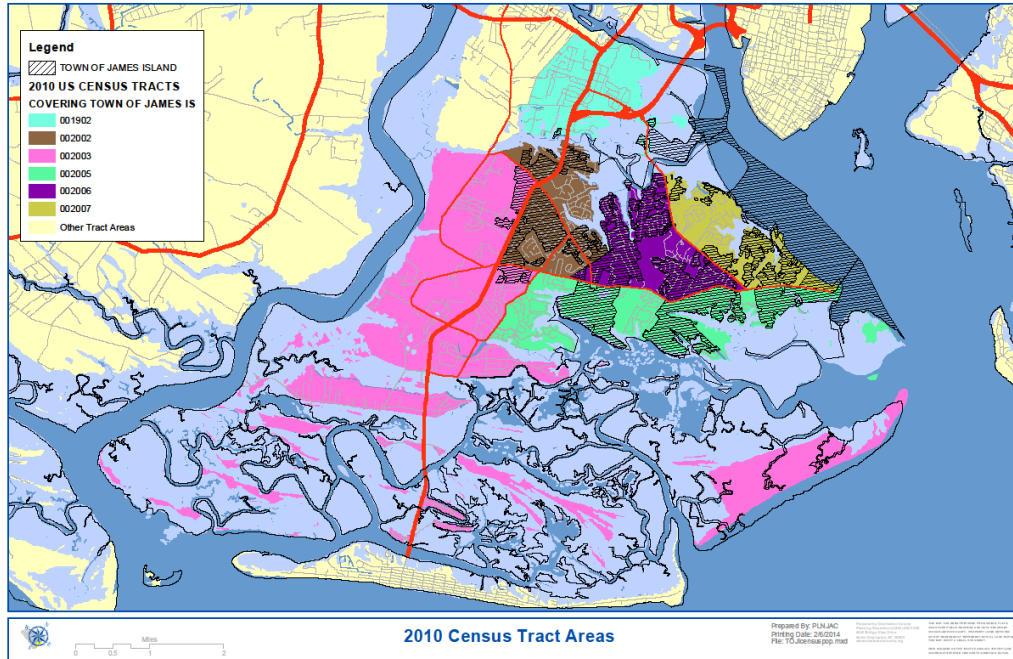
Population growth in Census Tracts that contain Town parcels increased significantly between 2000 and 2010 when the population grew by approximately 35 percent. Figure 3.5.1 shows the population change in Census Tracts that include Town parcels between 2000 and 2010.

Figure 3.5.1: Town of James Island Census Tract Population Growth, 2000-2010*

Census	Population	Change	Percentage
2000	24,005	0	0
2010	32,417	8,412	35

**Source: All data was derived from the U.S. Census Bureau and includes only Census Tracts that contain parcels located in the Town of James Island.*

Figure 3.5.2 James Island Census Tracts containing Town of James Island Parcels



An analysis of Census Block data, which is smaller than a Census Tract, and is the measurable data unit that most closely matches the Town's jurisdictional boundary, indicates that the 2010 population of the Town is 11,766. The data also indicates there are 5,162 households in the Town.

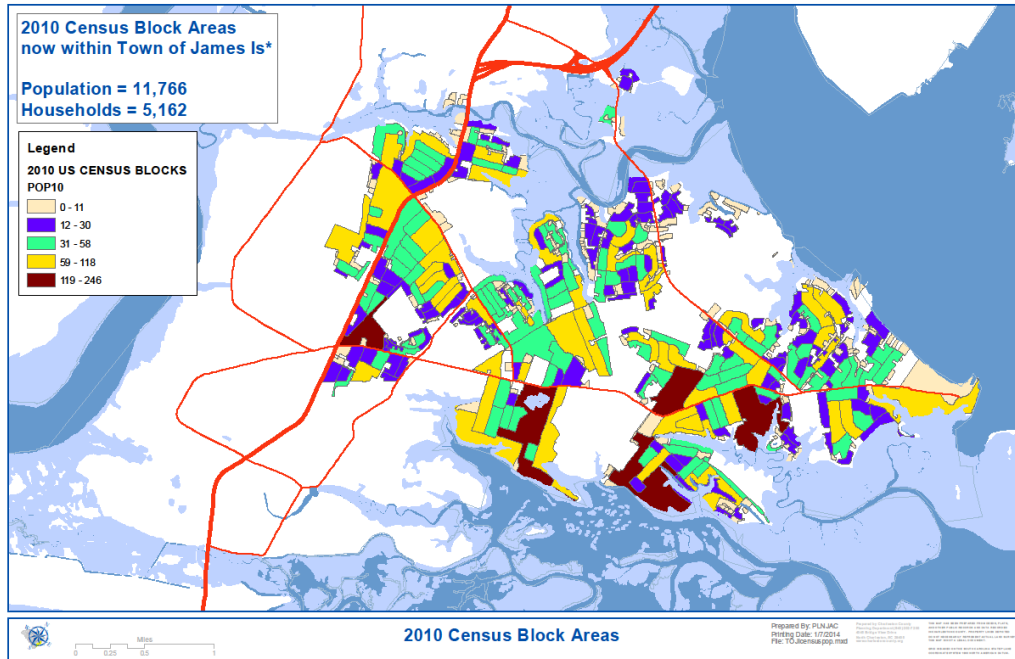


Figure 3.5.3 James Island Census Tracts containing Town of James Island Parcels

Due to the constraints of available Census information the closest reliable data for demographics is based on the 29412 Zip Code, which includes all of James Island. The 2020 Census will contain demographic information at the Town of James Island scale.

Age and Gender Distribution

Age/Gender/Race information was available from both the 2000 and 2010 Census at the Zip Code level. This includes parcels within the Town of James Island, City of Charleston, and unincorporated James Island. While the figures do not exactly match the Town's boundary, some general trends and issues may be identified to help direct the Town's future until more precise data is acquired in the 2020 Census.

The island, as a whole, increased in population by more than twelve percent. This increase is evenly distributed between males and females. Children aged five and younger increased by over eleven percent while all other minor aged groups declined, particularly the ten to fourteen year old age group which dropped by more than twenty-five percent.

The number of young adults (age 20-34 years) increased significantly while the 35-44 year age group was the only adult age group to see a decline. The older adult age groups experienced large increases, particularly the 85+ age group, which increased by almost sixty percent.

The percentage of adults living on James Island increased during the 2000-2010 period by almost eighteen percent, with the percentage of males slightly leading the percentage of females. This pattern holds for the other adult categories as well, with all groups increasing between ten and twenty percent.

Figure 3.5.2: Age/Gender Breakdown, 2000-2010

	2000	2010	Percent Change (2000-2010)
Total Population	31,923	35,850	12.30%
Male	15,311	17,217	12.45%
Female	16,612	18,633	12.14%
Age			
Under 5 Years	1,721	1,912	11.10%
5-9 Years	1,809	1,729	-4.42%
10-14 Years	2,140	1,601	-25.19%
15-19 Years	1,814	1,703	-6.12%
20-24 Years	2,058	2,852	38.58%
25-34 Years	4,669	6,865	47.03%
35-44 Years	5,197	4,475	-13.89%
45-54 Years	4,628	4,959	7.15%
55-59 Years	1,723	2,304	33.72%
60-64 Years	1,456	2,068	42.03%
65-74 Years	2,493	2,860	14.72%
75-84 Years	1,744	1,771	1.55%
85+ Years	471	751	59.45%
18+ Years	25,079	29,570	17.91%
Male	11,788	14,095	19.57%
Female	13,291	15,475	16.43%
21+ Years	24,079	28,459	18.19%
62+ Years	5,574	6,575	17.96%
65+ Years	4,708	5,382	14.32%
Male	1,909	2,258	18.28%
Female	2,799	3,124	11.61%

Source: U.S. Bureau of the Census for zip code 29412, which includes all of James Island including the Town, City of Charleston and unincorporated James Island.

Race

Between 2000 and 2010, the African American population decreased just over eleven percent while the White population increased just more than seven percent. The Hispanic population had the largest percentage increase while the Other Race category had the largest decrease at more than sixty-eight percent.

Figure 3.53: Population by Race, 2000-2010

	2000	2010	Percent Change (2000-2010)
White	24,898	29,183	17.21%
African American	6,364	5,650	-11.22%
Hispanic (of any race)	383	704	83.81%
Other Race	992	313	-68.45%

Source: U.S. Bureau of the Census

Population Element Needs

Population Element Needs include, but are not limited to the following:

- Monitoring local and national demographic trends and shifts; and
- Developing policies to meet the needs of the Town's population.

Population Element Goal

Encourage population growth through annexation to fill in the pockets of land that have not been annexed. This will allow the Town of James Island to have a better defined service area and more of a sense of community.

Population Element Strategies and Time Frames

The Town should undertake the following strategic actions in support of the Goals of this Plan. These implementation strategies will be reviewed a minimum of every five years and updated every ten years from the date of adoption of this Plan.

- P 1. Identify and propose annexation of the pockets of land surrounded by the Town limits.
- P 2. Monitor population growth trends and demographic shifts as indicators of population change and use this information in future updates to the Comprehensive Plan.
- P 3. Continue to monitor and evaluate local and national demographic trends for their potential impacts on land use and development patterns.

Chapter 3.6: Housing Element

will be updated following the release of new census data

Housing Element Overview and Purpose and Intent

The Housing Element of the Comprehensive Plan helps to tell the story of where the community has been and how it will progress in the future. As the Town of James Island continues to expand its boundaries, the need for a variety of housing options could be one of the greater challenges of the future. Each dwelling brings with it a set of issues that will be addressed by Town government at one time or another including how utilities will be extended to new development and how safe access will be provided.

The purpose and intent of the Housing Element is to help answer these and other questions by ensuring policies are in place to promote a supply of safe and structurally sound homes and the preservation of the existing housing stock.

Housing Element Background and Inventory of Existing Conditions

The following data is provided to illustrate the inventory of housing on the whole of James Island (zip code 29412). The housing data contained in this element is derived from the 2000 and 2010 Census, the most recent Census data available at the time of this update. One problem due to the timing of the Town's incorporation is that Census information was not collected at the level of the Town's jurisdictional boundary, leaving the zip code area as the closest boundary with information that can be compared. This document presents the Town's view of how housing issues should be addressed within the Town's jurisdictional boundary, and should contribute, along with the Charleston County Comprehensive Plan and the City of Charleston's Comprehensive Plan, to the overall issue of housing on the Island.

Total Housing Units

Between 2000 and 2010, James Island had a 24% increase in the number of housing units. This increase in housing units grew faster than the rate for Charleston County.

Figure 3.6.1 shows the total number of housing units on James Island, which increased by 24 percent, rising from 13,948 units in 2000 to 17,302 units in 2010.

Figure 3.6.1: Total Housing Units, 2000-2010

	2000	2010	% Change
James Island 29412	13,948	17,302	+24
Charleston County	141,031	169,984	+20

Source: U.S. Bureau of the Census

Households

The trend of decreasing household size has been seen around the nation. As couples elect to have fewer children or no children at all, as the numbers of single parents and adults living alone increase, etc. household size decreases. This trend is slightly different for

Figure 3.6.2: Average Household Size, 2000-2010

	2000	2010
Owner occupied	2.48	2.34
Renter occupied	2.1	2.12

Source: U.S. Bureau of the Census

James Island. While there has been a decrease in household size for owner occupied units, there has been a slight increase in the size for renter occupied units. It is important to note that the number of households and the population both increased.

Occupancy

Figure 3.6.4 illustrates the change in owner versus renter occupied housing units. The majority of the housing in James Island is owner occupied. Rental property is only a minor facet of the housing market here. Rental units can be a lower cost alternative to purchasing a home. They can also serve to provide decent housing until a down payment for a home can be made. Decent and affordable rental units can be a bonus to a local economy by keeping people within an area until a permanent housing alternative can be found. However, it should also be noted that those who are renting are often spending a higher percentage of their total income on rent alone, as opposed to homeowners. This fact can be caused by high rents combined with lower incomes.

Figure 3.6.3: Occupancy, 2000-2010

Owner Occupied Housing Units

	2000	2010	% Change
James Island 29412	9,676	10,650	+10%
Charleston County	75,267	87,068	+16%

Renter Occupied Housing Units

	2000	2010	% Change
James Island 29412	3,662	5,071	+38%
Charleston County	48,059	57,241	+19%

Source: U.S. Bureau of the Census

As shown in Figure 3.6.3, owner occupied units increased in both James Island and Charleston County over the past decade, although the percent increase in James Island was lower than that of the County. Meanwhile the percentage of renter occupied units increased at a much higher rate on James Island than in the County as a whole.

In 2000 The homeowner occupied units vacancy rate was .8% and the renter occupied vacancy rate was 5%. In 2010 the homeowner occupied vacancy rate rose to 2.3% while the rental vacancy rate climbed to 10.8%. A community's vacancy rate is an indication of the health of the housing market. On average, a municipality wants to have some vacant, quality housing to encourage new people to buy a home and move to the area. On the other hand, too much vacant housing can indicate a flooded housing market with depressed prices or a substandard quality of available housing.

Homes for Seasonal Use

Housing units for seasonal or recreational use can be a significant factor in housing issues for an area like James Island, which is close to Folly Beach and the Downtown Charleston peninsula. In 2000 112 (.8%) units were listed as being seasonal/recreational housing units. This figure increased to 308 (1.8%) in 2010.

Conclusions

James Island has seen some changes in the real estate market since 2000. While every community experiences fluctuations in housing for a variety of reasons it may be likely that many of the changes James Island is experiencing are related to the economic downturn that began in 2008. A bubble in the overall housing market played a key role in that downturn and communities across the nation were affected. James Island's proximity to both Folly Beach and the Downtown Charleston peninsula may have also played a role. While it may be more desirable to live near the beach and peninsula, affordable homes for the middle class are usually found farther from those areas, making rentals a more viable option for the short term as job security concerns may prevent some residents from entering into long term mortgages. The conversion of single family homes into duplexes is another issue that faces James Island. In some cases this process is not handled properly and can add to overcrowding issues.

Housing Element Needs

Housing Element needs include, but are not limited to the following:

- Promoting opportunities to ensure long term housing market stability;
- Promoting a diverse housing stock with access to facilities and services; and
- Ensuring a sufficient supply of safe and structurally sound homes.
- Encouraging the provision of high quality, affordable homes in keeping with the single-family residential character of the Town.

Housing Element Goal

Encourage high quality, affordable housing for people of all ages, incomes, and physical abilities.

Housing Element Strategies and Time Frames

The Town should undertake the following strategic actions in support of the Goals of this Plan. These implementation strategies will be reviewed a minimum of every five years and updated every ten years from the date of adoption of this Plan.

- H 1. Continue to enforce the Building Code to protect the general health, safety and welfare of the population.
- H 2. Remaining undeveloped residential property should be developed in a manner consistent with the Town's Single Family Residential pattern.
- H 3. Affordable housing opportunities should be utilized such as promoting density bonuses for qualified affordable housing lenders and builders.

Chapter 3.7: Transportation Element

Transportation Element Overview and Purpose and Intent

In 2007, South Carolina State Law was amended to require that transportation be a stand-alone element in the Comprehensive Plan, separate from the Community Facilities Element, where it was previously located. Transportation is an important element because it provides strategies tying the movement of people and goods with economic development, land use, and community facilities.

The purpose and intent of the Transportation Element is to present information and strategies that respect the Town's suburban character and natural and cultural resources in the provision and use of any transportation system, consider the impacts of development on the transportation system, encourage the provision of safe, convenient, pedestrian and bicycle systems in appropriate areas, and support emergency evacuation and transportation planning policies.

Transportation Element Background and Inventory of Existing Conditions

Roads

The 120 roads owned by the Town of James Island are neighborhood streets. Other roads in the Town are owned either by Charleston County or the South Carolina Department of Transportation. Maintenance of Town roads is managed through an intergovernmental agreement with the Charleston County Public Works Department. Ben, Jeffrey and Lemontree Roads were paved in the summer of 2015, with Jeffrey and Lemontree Roads paved with pervious asphalt and following Low Impact Development (LID) standards. The paving of Rembert Road was completed in June of 2019 and Sterling Drive was rocked with pervious gravel to improve drainage. The Town will continue to advocate for the paving of roads within its corporate limits based on resident requests or government agency requests; the Town will also continue to improve roadside drainage, while considering stormwater runoff, when considering any new road development projects.

In 2006, Charleston County completed a Comprehensive Transportation Plan as part of the Charleston County Half Cent Transportation Sales Tax Program. The Transportation Plan includes a forecast of Charleston County road projects over the next twenty-five years, a review of funding sources and leverage options and a review of the County's mass transit system. Other funding mechanisms for Charleston County roads include: The Charleston County Transportation Committee (CTC), a group of professionals appointed by the Legislative Delegation from all legislative bodies within the County whose purpose is to distribute gas tax funding for small construction and resurfacing projects; and SC Department of Transportation, whose Commission determines the funding priorities for the federal aid program following each new federal highway bill and annual appropriations act. This includes the funding level allocated to the BCD Council of Governments through the Charleston Area Transportation Study (CHATS).

Figure 3.7.1 shows the traffic counts at traffic count stations in the James Island area in 2014 and 2019. Maybank Highway at the Stono Bridge saw the greatest traffic increase over the

period, rising from 23,200 vehicles per day to 32,500 vehicles per day. Fort Johnson Road at Grand Concourse saw the greatest traffic decrease, dropping from 7,400 vehicles per day to 6,800 vehicles per day. Overall the largest increases in traffic on James Island occurred on The James Island Connector at Harbor View Road (26,500 to 33,500) and Maybank Highway at the Stono Bridge (23,200 to 32,500). This information is collected by the Berkeley-Charleston-Dorchester Council of Governments which keeps traffic count data for all three counties.

Figure 3.7.1, James Island Area Traffic Counts, 2013-2019

Station	General Location	2013	2019	Change 2013-2019
233	Folly Road and Oak Island Road	10,700	16,200	5,500
237	Folly Road and Grimball Road	14,200	16,600	2,400
241	Folly Road and Fort Johnson Road	24,800	29,800	5,000
245	Folly Road and Harbor View Road	30,700	33,000	2,300
269	Maybank Highway at Stono Bridge	23,200	32,500	9,000
369	Riverland Drive and Central Park Road	10,400	12,000	2,000
372	Camp Road and Dills Bluff Road	4,800	4,400	-400
376	Riverland Drive and Camp Road	5,300	5,500	200
377	Dills Bluff Road and James Drive	3,100	3,100	0
384	Harbor View Road and Harborview Lane	22,400	23,400	1000
387	Fort Johnson Road and Grand Concourse	7,400	6,800	-600
410	James Island Connector at Harbor View Road	26,500	33,500	7,000
607	Maybank Highway and Fleming Road	2,700	2,500	-200

Source: BCD Council of Governments, 2003 SC DOT, 2014.

Folly Road Improvements

Folly Road is a key five lane wide artery, connecting James Island with the West Ashley areas of Charleston to the north and to the town of Folly Beach to the south. The 7.87 mile segment of Folly Road between Center Street on Folly Beach and the Wappoo Cut Bridge truly is James Island's Main Street. However, Folly Road is facing multiple issues including inefficient traffic operations, inadequate sidewalks, limited bike lanes, and little infrastructure to support CARTA's bus system. At times of heavy rain, many storm drains prove inadequate for the storm water generated in the area. On weekends in the spring and summer beach season, daytime traffic is impacted by residents and tourists making their way to and from Folly Beach.

In addition to area comprehensive plans, local governments on James Island came together in 2016 and created The Folly Road Corridor Overlay Zoning District (FRC-O). This Overlay fronts on the east and west sides of Folly Road from its intersection with Tatum Road south to Folly River. The FRC-O district was adopted to implement traffic safety measures, to

improve the visual character of the corridor, and to create consistency between the Town of James Island, the City of Folly Beach, the City of Charleston, and unincorporated Charleston County concerning land use and design standards. It is the intent of all jurisdictions to work cooperatively together on Folly Road related issues.

A Complete Streets Corridor Study and Engineering Report for Folly Road called ReThink Folly was completed in 2016. Participants in this effort included the Berkeley/Charleston/Dorchester Council of Governments (BCD-COG), the South Carolina Department of Transportation (SCDOT), the Charleston Area Regional Transit Authority (CARTA), the Town of James Island, the City of Charleston, the City of Folly Beach, Charleston County, and key advocacy organizations such as Charleston Moves, the Coastal Conservation League and Lowcountry Local First. The vision included in the ReThink Folly Plan includes friendly spaces and environments for walking and bicycling, innovative storm water management techniques, and convenient and efficient mass transit options. The plan also addresses land use and devises a landscape and urban design concept for the roadway that encourages pedestrian activity and presents a pleasing face for James Island's Main Street.

In 2017 a Steering Committee composed of various community and municipal stakeholders was selected to act as a recommending body to the ReThink Folly project. Reveer Group, LLC. presented a plan to segment 5 sections of the Folly Road corridor for either sidewalks or a 12' multi use path along the west side of Folly Road between the Ellis Creek and Sol Legare. Monthly meetings throughout the remainder of 2017 and 2018 included the establishment of funding sources, priority of segments, phases of the project and feasibility of recommendations presented by the committee. Ultimately the committee successfully agreed on prioritization of goals and narrowed down proposed design alternatives. In March of 2019, following public bid, Toole Design Group was unanimously selected to act as Program Manager of the Plan. ReThink Folly Road successfully held its first "State of the Plan" event in March of 2020. This event allowed staff and program managers to offer updates and outline future phases of the Plan for residents of James Island.

As of the date of this Update, the ReThink Folly Road Project is in the ~~design~~ permitting stages of Phase I that include 8' sidewalks on the west side of Folly Road from Ellis Creek to the recent improvements at the Camp/Folly intersection, as well as 7' sidewalks on the east side of Folly Road from the Camp/Folly intersection to Wilton Street. Right-of-way acquisition is expected to begin Summer of 2020. Phase 1 will also include some burial of power lines, wider bike lanes, a road diet for the interior turn lane and improved markings.

Another project that occurred along Folly Road was the Charleston County ½ Cent Sales Tax improvements to the intersection of Folly Road and Camp Road. This project involved improvements to Folly Road from approximately 1,000 feet south of Camp Road to the intersection with Eugene Gibbs Street and Rivers Point Row and improvements to Camp Road from West Madison Avenue to Oyster Point Row. Major components of the project included widening Folly Road and Camp Road to provide additional turn lanes, realigning Eugene Gibbs Street and Rivers Point Row to include turn lanes, adding bicycle lanes and sidewalks within the project area, upgrading stoplights to the mast arm style that include pedestrian hand/man signals for the newly stamped brick crosswalks, and improving

drainage and water quality measures. Numerous grand live oak trees that line Camp Road were protected during construction. Final improvements include the attractive Town-provided Bus Shelter completed in 2018 and commenced with landscaping and street trees in the latter part of 2020.

The Fort Johnson Road and Folly Road intersection will need to be improved, with the ReThink Folly Road Complete Streets Plan suggesting a traffic circle. Needed improvements include bicycle/pedestrian facilities, improved drainage, dedicated turn lanes, and turn signals. The ongoing and future development at the new Riverland Market shopping center (Publix, etc) and adjacent parcels will have a big impact on this intersection.

Riverland Drive

The BCDCOG completed a study of the Riverland Drive Scenic Byway in October of 2014. Riverland Drive was designated as a scenic byway in the South Carolina Scenic Highways Committee in 1988. The Corridor Management Plan addressed issues related to the byway such as historic and cultural preservation, roadway safety, and economic development. It will specifically outline how to preserve, protect, and enhance the byway's character and assets that define the corridor. The CMP plan will also define how the corridor should look like in 10-15 years with the goals and implementation strategies on how to get there.

Harbor View Road Improvements

Harbor View Road is an Urban Minor Arterial (serves moderate-length trips at a lower level than a primary road and provides intracommunity connectivity) on James Island that connects Folly Road with Fort Johnson Road, a distance of approximately 3.7 miles. The recently completed project improved Harbor View Road between North Shore Drive and Fort Johnson Road (2.1 miles) by providing a center two-way left-turn lane between North Shore Drive and Affirmation Boulevard, adding right turn lanes at major intersections, traffic signals at Fort Sumter Drive and Mikell Drive, a roundabout at the intersection with Fort Johnson Road, and adding pedestrian and bicycle facilities for the length of the project. The purpose of the project was to improve traffic flow and safety on Harbor View Road and to provide adequate bicycle and pedestrian facilities. Construction was completed in the fall of 2016 and includes landscaping, street trees, and wildlife crossings around marsh areas.

Bicycle Lanes and Sidewalks

Bicycle lanes and sidewalks are spread intermittently throughout the island. Recently the Town has undertaken an effort to connect and extend these alternative methods of transportation. Bicycle lanes have become a main focus of the current ReThink Folly Road Plans. Current plans in place include both widening and painting the existing bike lanes in the Phase 1 plan described previously. Within the past ten years, sidewalks have been extended along Fort Johnson Road, Camp Road, Honeyhill Road and constructed on Foxcroft Road to connect Godber Street to Stillwater Drive. Other completed sidewalk projects include Dills Bluff Phases I and II and the Dills Bluff Boardwalk, Seaside Lane (which is a pervious asphalt sidewalk), and Fort Johnson Road Phases III and IV.

Additionally, sidewalk projects currently under construction or scheduled for the near-term include Quail Drive, Lighthouse Blvd, Camp Road from Folly Road to James Island County Park, Dills Bluff Phase III and IV, Regatta Road, Nabors Drive, and Folly Road from Wilton Street to Fort Johnson.

Public Transportation

The Charleston Area Regional Transportation Authority (CARTA) was formed in 1997 and is responsible for public transportation in the Greater Charleston area, providing transit services to 206,745 residents in the urban areas of Berkeley, Charleston and Dorchester Counties. Between 2009 and 2013, ridership on CARTA's fixed route and demand response service increased 20% from nearly 4.1 million riders in 2009 to 4.9 million riders in 2013. Route 31 provides local circulation on James Island and connects the community to Charleston. Route 31 is a local service operating between the Charleston Visitors' Center in downtown Charleston and Battery Island Drive in south Charleston, primarily via Folly Road and Spring/Cannon Street. The route also serves Maybank Highway, Riverland Drive, and Central Park Road on outbound trips only. CARTA has received requests for additional transit service on James Island during the peak commute hours. There are currently 9 bus stops within the Town's boundary, although there are 43 stops serving the Island as a whole.

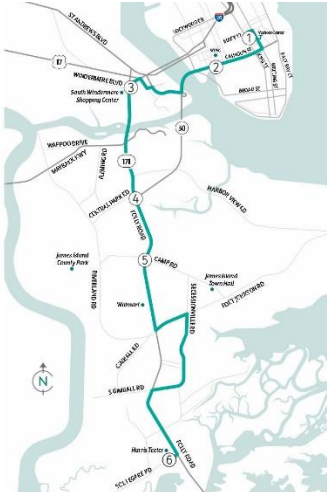
	CARTA Express Service 1 Riders	CARTA James Island Route 31
2011	249,555	87,280
2012	231,998	95,061
2013	213,466	80,801
2017	159,380	41,369
2018	146,600	37,369
2019	130,173	43,370

Lastly, the [Transit Framework Plan](https://bcdcog.com/wp-content/uploads/2018/11/03-Corridor-Alternatives-Evaluation-Recommendations.pdf) identifies Folly Road as a BRT (Bus Rapid Transit) Lite corridor (<https://bcdcog.com/wp-content/uploads/2018/11/03-Corridor-Alternatives-Evaluation-Recommendations.pdf>, Page 24), with a recommendation for the BRT Lite to be able to connect James Island residents with reliable travel times to/from downtown Charleston via Folly Road.

ROUTE 31 Southbound (con rumbo al sur)

WEEKDAYS *día laborable* PM Times

Mary St / Meeting St	Calhoun St / Jonathan Lucas St	Folly Rd Blvd / Windermere Blvd	Folly Rd / Central Park Rd	Folly Rd / Camp Rd	Sol Legare Rd / Folly Rd
1	2	3	4	5	6
6:00	6:06	6:14	6:18	6:21	6:34
7:30	7:38	7:47	7:53	7:56	8:10
9:00	9:08	9:15	9:19	9:23	9:36
10:25	10:33	10:40	10:45	10:49	11:01
11:45	11:55	12:02	12:06	12:10	12:24
1:10	1:20	1:27	1:31	1:35	1:49
2:35	2:45	2:53	2:57	3:01	3:13
4:10	4:20	4:28	4:32	4:37	4:52
5:40	5:50	5:58	6:03	6:08	6:22
7:05	7:12	7:19	7:22	7:25	7:39
8:25	8:32	8:39	8:42	8:45	8:58



SATURDAY *el sábado*

Mary St / Meeting St	Calhoun St / Jonathan Lucas St	Folly Rd Blvd / Windermere Blvd	Folly Rd / Central Park Rd	Folly Rd / Camp Rd	Sol Legare Rd / Folly Rd
1	2	3	4	5	6
8:05	8:12	8:18	8:22	8:25	8:39
9:25	9:32	9:38	9:42	9:45	9:59
10:45	10:52	10:58	11:02	11:07	11:25
12:20	12:29	12:35	12:39	12:44	1:01
1:55	2:04	2:10	2:14	2:19	2:35
3:20	3:29	3:36	3:40	3:45	4:02
4:50	4:57	5:03	5:07	5:10	5:24
6:10	6:17	6:23	6:27	6:30	6:44
7:30	7:37	7:43	7:47	7:50	8:04

SUNDAY *el domingo*

Mary St / Meeting St	Calhoun St / Jonathan Lucas St	Folly Rd Blvd / Windermere Blvd	Folly Rd / Central Park Rd	Folly Rd / Camp Rd	Sol Legare Rd / Folly Rd
1	2	3	4	5	6
9:05	9:12	9:18	9:22	9:25	9:39
10:25	10:32	10:38	10:42	10:45	10:59
11:45	11:52	11:58	12:02	12:05	12:22
1:10	1:17	1:23	1:27	1:30	1:46
2:30	2:37	2:43	2:47	2:50	3:04
3:45	3:53	3:59	4:03	4:07	4:23
5:10	5:17	5:23	5:27	5:30	5:44
6:25	6:32	6:38	6:42	6:45	6:59

ROUTE 31 FOLLY ROAD



CHARLESTON VISITORS CENTER
WALMART
FOLLY RD & SOL LEGARE RD
MUSC/COLLEGE OF CHARLESTON

FREE WIFI
FIND ROUTE INFO IN THE TRANSIT APP
843.724.7420 ridecarta.com

FARE INFO

EXACT CHANGE ONLY PLEASE (Drivers cannot make change)

32 Regular Fixed Routes \$3.50 Express Routes

Transfer: Free (valid only on original boarding*)

Senior Citizens (55+): \$1.50 Must present a valid ID (either a Medicare card or ID card with date of birth).

Disabled: \$1.25 (valid only with CARTA issued ID)

Children (under the age of 6): Free IF accompanied by a paying customer.

*Transfers are available for some direction routes where routes connect.

BUS PASS INFO

(all passes good on Fixed Routes)

1 DAY PASS: \$7 (available on all CARTA vehicles)

3 DAY PASS: \$14 | 31 DAY PASS: \$57 | 16 TRIP PASS: \$38

40 TRIP PASS: \$68 | 7 DAY WEEKLY PASS: \$15

7 DAY WEEKLY PASS: EXPRESS: \$28

EXPRESS MONTHLY PASS: \$99 | STUDENT PASS: \$80 (Per Semester)*

*Students K-12 ride free with Student ID (Photo Program)

HOLIDAY SCHEDULE:

All routes operate on a Sunday schedule on the following holidays:

MLK Day | Memorial Day | Independence Day | Labor Day | Thanksgiving

Christmas Eve | Christmas Day | Day after Christmas | New Years Day

DASH Shuttles do not operate on: Thanksgiving | Christmas Day | New Years Day

Express Routes do not operate on: the Day after Thanksgiving and the Day after Christmas

GENERAL INFORMATION

• Arrive at your stop at least five minutes before the bus is scheduled.

• When you see your bus, signal the driver to stop for you.

• Check the destination sign before you board.

BUS SAFETY

You are able to help us in providing you with a safe ride and dependable schedule by:

• Taking your seat as soon as possible and not changing seats unless absolutely necessary.

• Allow senior citizens and people with disabilities to use the seats designated as "Priority Seating." "Priority Seating" signs are posted above designated seats and the driver may direct non-disabled riders to move in order to allow senior/disabled riders the use of the designated seats and/or wheelchair securement devices.

• Request your transfer when you first board. Transfers apply to paid routes only.

• Please exit from the center door when leaving a CARTA Bus. This move will allow boarding passengers to use the front door and helps to keep the bus on schedule.

Prohibited on all CARTA buses:

No open cans or bottles | No Alcohol | No Smoking | No Weapons

To avoid distraction and discomfort of driver and passengers we ask that you:

Please do not use profanity and refrain from playing individual radios or other devices without headphones.

All CARTA vehicles are wheelchair accessible. CARTA will make reasonable modifications on request.

For Comments and Complaints Contact CARTA at:

3664 Leeds Avenue, N, Charleston, SC 29403 | Tel: (843) 724-7420

Follow us on Social Media

@rideCARTA

Twitter Facebook Instagram

ROUTE 31

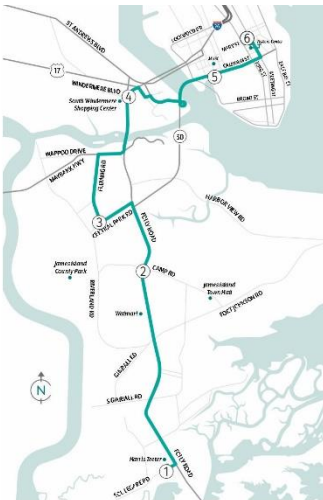
Northbound (en dirección norte)

WEEKDAYS *día laborable* PM Times

Sol Legare Rd / Folly Rd	Folly Rd / Camp Rd	Fleming Rd / Central Park Rd	Folly Rd Blvd / Windermere Blvd	Calhoun St / Jonathan Lucas St	Mary St / Meeting St
1	2	3	4	5	6
5:25	5:32	5:37	5:45	5:52	5:57
6:40	6:48	6:54	7:04	7:14	7:24
8:15	8:23	8:29	8:39	8:47	8:54
9:40	9:47	9:53	10:02	10:09	10:20
11:05	11:12	11:18	11:27	11:33	11:41
12:30	12:37	12:43	12:52	12:58	1:06
1:55	2:02	2:08	2:17	2:23	2:31
3:20	3:27	3:34	3:44	3:52	4:02
4:55	5:03	5:09	5:19	5:25	5:35
6:25	6:32	6:37	6:44	6:52	6:58
7:45	7:52	7:57	8:04	8:11	8:17
9:00	9:07	9:12	9:19	9:25	9:30

SATURDAY *el sábado*

Sol Legare Rd / Folly Rd	Folly Rd / Camp Rd	Fleming Rd / Central Park Rd	Folly Rd Blvd / Windermere Blvd	Calhoun St / Jonathan Lucas St	Mary St / Meeting St
1	2	3	4	5	6
7:25	7:33	7:40	7:48	7:54	8:00
8:45	8:53	9:00	9:08	9:14	9:21
10:05	10:13	10:20	10:28	10:34	10:41
11:30	11:41	11:50	11:58	12:05	12:14
1:10	1:20	1:28	1:36	1:42	1:50
2:40	2:48	2:55	3:03	3:09	3:16
4:10	4:18	4:26	4:34	4:40	4:47
5:30	5:38	5:46	5:54	6:00	6:07
6:50	6:58	7:05	7:13	7:19	7:26
8:05	8:13	8:20	8:28	8:34	8:40



SUNDAY *el domingo*

Sol Legare Rd / Folly Rd	Folly Rd / Camp Rd	Fleming Rd / Central Park Rd	Folly Rd Blvd / Windermere Blvd	Calhoun St / Jonathan Lucas St	Mary St / Meeting St
1	2	3	4	5	6
8:25	8:33	8:38	8:46	8:52	8:59
9:45	9:53	9:58	10:06	10:12	10:20
11:05	11:13	11:18	11:26	11:32	11:38
12:30	12:38	12:43	12:51	12:57	1:05
1:50	1:58	2:03	2:11	2:17	2:23
3:10	3:18	3:23	3:31	3:37	3:43
4:30	4:39	4:44	4:52	4:58	5:05
5:50	5:58	6:03	6:11	6:17	6:23

CARTA Express Route 1 runs during the morning and afternoon peak periods. The Express Route station is located at the James Island Walmart and delivers passengers back and forth to Downtown Charleston. Express Routes are free for College of Charleston and MUSC students and faculty. The TriCounty Link system serves the area with route C205 Johns Island/James Island. C205 has multiple-stop service between the JI Walmart and John's Island. It features coordinated transfers with CARTA Express Route 1. Marketing and awareness of these services could increase usage, mitigating traffic on James Island. Sidewalks are an essential building block for good transit service. All CARTA buses are equipped with bicycle racks and are equipped for riders with disabilities. Additionally, Tel-A-Ride is a specialized curb-to-curb transportation service that is available to persons with disabilities who are unable to use the local public bus service. CARTA is also working on a vanpool program, real-time signage, solar lighting, installing more shelters, and transit-supportive land uses to make transit service more effective.

EXPRESS ROUTE 3 Southbound
(con rumbo al sur)

EXPRESS ROUTE 3 Northbound
(en dirección norte)

RIDING EXPRESS
\$3.50 : Express Routes

(Please have exact change as bus drivers are unable to make change)

- Please be prepared to board the CARTA Express quickly and find your seat.
- Open Express Route features a handful of "curb-to-curb" stops. We ask that you please be prepared to wait the bus as you approach and to stay seated until the bus comes to a full stop before exiting.
- All Express buses are equipped with bike racks should you wish to take your bike with you. Please know that a maximum of two bikes can fit into the front of the CARTA bus at any time.

PARKING FOR CARTA EXPRESS

- For commuters who would prefer to use CARTA to get to work, but don't want to walk to the bus stop, parking lots at some of the business stops provide a place to leave the car. Look for the signs indicating Express bus parking areas.
- All parking lot locations are served by CARTA Express routes with multiple departures during the morning and afternoon peak periods.

PARK AND RIDE AT THE:

- Rivers Ave Park and Ride on Melnick Dr in North Charleston
- Citadel Mall parking lot near Orleans Road at the CARTA Bay Shelter
- Wando Crossing Wal-Mart parking lot at Mt. Pleasant
- Wal-Mart at Colonial Plantation at Mt. Pleasant
- Wal-Mart on Holly Road
- Wando Center Parking Garage at Wando Street in Summerville Charleston (Paid Parking)
- Dorchester Village Shopping Center at the corner of Dorchester Rd and Oak Hollow Rd.
- Festival Center at the intersection of Dorchester Rd and Ashley Phosphate Ave.

CARTA ASSUMES NO LIABILITY FOR VEHICLES LEFT AT THESE LOCATIONS.

PARKING IS AT YOUR OWN RISK.

WEEKDAYS *día laborable*

Stop	520	532	540	548	557	569	613	AM
Dorchester Village Shopping Center	520	532	540	548	557	569	613	AM
Festival Center	550	563	571	-	586	598	642	
Joint Base Charleston	615	631	642	-	710	712	716	
Joint Base Charleston	725	721	743	-	809	812	816	
Joint Base Charleston	730	745	801	-	826	831	834	
Joint Base Charleston	805	819	830	-	853	858	859	
Joint Base Charleston	-	-	-	907	911	915	PM	
Joint Base Charleston	-	-	-	937	941	945		
Joint Base Charleston	422	436	443	451	513	516	524	
Joint Base Charleston	425	510	519	-	544	548	552	
Joint Base Charleston	600	514	520	-	-	-	-	
Joint Base Charleston	625	537	544	-	-	-	-	
Joint Base Charleston	650	702	709	-	-	-	-	
Joint Base Charleston	-	-	-	720	724	728		
Joint Base Charleston	619	830	836	-	-	-	-	

WEEKDAYS *día laborable*

Stop	513	535	534	640	645	657	AM
Joint Base Charleston	513	535	534	640	645	657	AM
Joint Base Charleston	642	645	-	705	712	723	
Joint Base Charleston	715	719	-	741	747	758	
Joint Base Charleston	816	818	-	-	-	-	
Joint Base Charleston	834	837	-	-	-	-	
Joint Base Charleston	859	907	-	-	-	-	
Joint Base Charleston	917	920	940	949	957	975	PM
Joint Base Charleston	937	930	-	920	928	949	
Joint Base Charleston	946	949	-	925	930	954	
Joint Base Charleston	926	923	-	959	906	921	
Joint Base Charleston	954	957	-	920	930	945	
Joint Base Charleston	730	732	-	752	758	811	

FARE INFO

EXACT CHANGE OFFERED FOR EXPRESS (exact change offered)

Regular Fares Routes - \$3.50 : Express Routes

Transfer: Free (one able to board on board)

Senior Citizens (65+): \$2.00 (one able to board on board)

Students (College of Charleston and MUSC): \$2.00 (one able to board on board)

Children (under the age of 6): \$1.00 (one able to board on board)

Children (6-11): \$2.00 (one able to board on board)

Children (12-17): \$3.50 (one able to board on board)

Children (18-21): \$3.50 (one able to board on board)

Children (22-24): \$3.50 (one able to board on board)

Children (25-29): \$3.50 (one able to board on board)

Children (30-34): \$3.50 (one able to board on board)

Children (35-39): \$3.50 (one able to board on board)

Children (40-44): \$3.50 (one able to board on board)

Children (45-49): \$3.50 (one able to board on board)

Children (50-54): \$3.50 (one able to board on board)

Children (55-59): \$3.50 (one able to board on board)

Children (60-64): \$3.50 (one able to board on board)

Children (65-69): \$3.50 (one able to board on board)

Children (70-74): \$3.50 (one able to board on board)

Children (75-79): \$3.50 (one able to board on board)

Children (80-84): \$3.50 (one able to board on board)

Children (85-89): \$3.50 (one able to board on board)

Children (90-94): \$3.50 (one able to board on board)

Children (95-99): \$3.50 (one able to board on board)

Children (100-104): \$3.50 (one able to board on board)

Children (105-109): \$3.50 (one able to board on board)

Children (110-114): \$3.50 (one able to board on board)

Children (115-119): \$3.50 (one able to board on board)

Children (120-124): \$3.50 (one able to board on board)

Children (125-129): \$3.50 (one able to board on board)

Children (130-134): \$3.50 (one able to board on board)

Children (135-139): \$3.50 (one able to board on board)

Children (140-144): \$3.50 (one able to board on board)

Children (145-149): \$3.50 (one able to board on board)

Children (150-154): \$3.50 (one able to board on board)

Children (155-159): \$3.50 (one able to board on board)

Children (160-164): \$3.50 (one able to board on board)

Children (165-169): \$3.50 (one able to board on board)

Children (170-174): \$3.50 (one able to board on board)

Children (175-179): \$3.50 (one able to board on board)

Children (180-184): \$3.50 (one able to board on board)

Children (185-189): \$3.50 (one able to board on board)

Children (190-194): \$3.50 (one able to board on board)

Children (195-199): \$3.50 (one able to board on board)

Children (200-204): \$3.50 (one able to board on board)

Children (205-209): \$3.50 (one able to board on board)

Children (210-214): \$3.50 (one able to board on board)

Children (215-219): \$3.50 (one able to board on board)

Children (220-224): \$3.50 (one able to board on board)

Children (225-229): \$3.50 (one able to board on board)

Children (230-234): \$3.50 (one able to board on board)

Children (235-239): \$3.50 (one able to board on board)

Children (240-244): \$3.50 (one able to board on board)

Children (245-249): \$3.50 (one able to board on board)

Children (250-254): \$3.50 (one able to board on board)

Children (255-259): \$3.50 (one able to board on board)

Children (260-264): \$3.50 (one able to board on board)

Children (265-269): \$3.50 (one able to board on board)

Children (270-274): \$3.50 (one able to board on board)

Children (275-279): \$3.50 (one able to board on board)

Children (280-284): \$3.50 (one able to board on board)

Children (285-289): \$3.50 (one able to board on board)

Children (290-294): \$3.50 (one able to board on board)

Children (295-299): \$3.50 (one able to board on board)

Children (300-304): \$3.50 (one able to board on board)

Children (305-309): \$3.50 (one able to board on board)

Children (310-314): \$3.50 (one able to board on board)

Children (315-319): \$3.50 (one able to board on board)

Children (320-324): \$3.50 (one able to board on board)

Children (325-329): \$3.50 (one able to board on board)

Children (330-334): \$3.50 (one able to board on board)

Children (335-339): \$3.50 (one able to board on board)

Children (340-344): \$3.50 (one able to board on board)

Children (345-349): \$3.50 (one able to board on board)

Children (350-354): \$3.50 (one able to board on board)

Children (355-359): \$3.50 (one able to board on board)

Children (360-364): \$3.50 (one able to board on board)

Children (365-369): \$3.50 (one able to board on board)

Children (370-374): \$3.50 (one able to board on board)

Children (375-379): \$3.50 (one able to board on board)

Children (380-384): \$3.50 (one able to board on board)

Children (385-389): \$3.50 (one able to board on board)

Children (390-394): \$3.50 (one able to board on board)

Children (395-399): \$3.50 (one able to board on board)

Children (400-404): \$3.50 (one able to board on board)

Children (405-409): \$3.50 (one able to board on board)

Children (410-414): \$3.50 (one able to board on board)

Children (415-419): \$3.50 (one able to board on board)

Children (420-424): \$3.50 (one able to board on board)

Children (425-429): \$3.50 (one able to board on board)

Children (430-434): \$3.50 (one able to board on board)

Children (435-439): \$3.50 (one able to board on board)

Children (440-444): \$3.50 (one able to board on board)

Children (445-449): \$3.50 (one able to board on board)

Children (450-454): \$3.50 (one able to board on board)

Children (455-459): \$3.50 (one able to board on board)

Children (460-464): \$3.50 (one able to board on board)

Children (465-469): \$3.50 (one able to board on board)

Children (470-474): \$3.50 (one able to board on board)

Children (475-479): \$3.50 (one able to board on board)

Children (480-484): \$3.50 (one able to board on board)

Children (485-489): \$3.50 (one able to board on board)

Children (490-494): \$3.50 (one able to board on board)

Children (495-499): \$3.50 (one able to board on board)

Children (500-504): \$3.50 (one able to board on board)

Children (505-509): \$3.50 (one able to board on board)

Children (510-514): \$3.50 (one able to board on board)

Children (515-519): \$3.50 (one able to board on board)

Children (520-524): \$3.50 (one able to board on board)

Children (525-529): \$3.50 (one able to board on board)

Children (530-534): \$3.50 (one able to board on board)

Children (535-539): \$3.50 (one able to board on board)

Children (540-544): \$3.50 (one able to board on board)

Children (545-549): \$3.50 (one able to board on board)

Children (550-554): \$3.50 (one able to board on board)

Children (555-559): \$3.50 (one able to board on board)

Children (560-564): \$3.50 (one able to board on board)

Children (565-569): \$3.50 (one able to board on board)

Children (570-574): \$3.50 (one able to board on board)

Children (575-579): \$3.50 (one able to board on board)

Children (580-584): \$3.50 (one able to board on board)

Children (585-589): \$3.50 (one able to board on board)

Children (590-594): \$3.50 (one able to board on board)

Children (595-599): \$3.50 (one able to board on board)

Children (600-604): \$3.50 (one able to board on board)

Children (605-609): \$3.50 (one able to board on board)

Children (610-614): \$3.50 (one able to board on board)

Children (615-619): \$3.50 (one able to board on board)

Children (620-624): \$3.50 (one able to board on board)

Children (625-629): \$3.50 (one able to board on board)

Children (630-634): \$3.50 (one able to board on board)

Children (635-639): \$3.50 (one able to board on board)

Children (640-644): \$3.50 (one able to board on board)

Children (645-649): \$3.50 (one able to board on board)

Children (650-654): \$3.50 (one able to board on board)

Children (655-659): \$3.50 (one able to board on board)

Children (660-664): \$3.50 (one able to board on board)

Children (665-669): \$3.50 (one able to board on board)

Children (670-674): \$3.50 (one able to board on board)

Children (675-679): \$3.50 (one able to board on board)

Children (680-684): \$3.50 (one able to board on board)

Children (685-689): \$3.50 (one able to board on board)

Children (690-694): \$3.50 (one able to board on board)

Children (695-699): \$3.50 (one able to board on board)

Children (700-704): \$3.50 (one able to board on board)

Children (705-709): \$3.50 (one able to board on board)

Children (710-714): \$3.50 (one able to board on board)

Children (715-719): \$3.50 (one able to board on board)

Children (720-724): \$3.50 (one able to board on board)

Children (725-729): \$3.50 (one able to board on board)

Children (730-734): \$3.50 (one able to board on board)

Children (735-739): \$3.50 (one able to board on board)

Children (740-744): \$3.50 (one able to board on board)

Children (745-749): \$3.50 (one able to board on board)

Children (750-754): \$3.50 (one able to board on board)

Children (755-759): \$3.50 (one able to board on board)

Children (760-764): \$3.50 (one able to board on board)

Children (765-769): \$3.50 (one able to board on board)

Children (770-774): \$3.50 (one able to board on board)

Children (775-779): \$3.50 (one able to board on board)

Children (780-784): \$3.50 (one able to board on board)

Children (785-789): \$3.50 (one able to board on board)

Children (790-794): \$3.50 (one able to board on board)

Children (795-799): \$3.50 (one able to board on board)

Children (800-804): \$3.50 (one able to board on board)

Children (805-809): \$3.50 (one able to board on board)

Children (810-814): \$3.50 (one able to board on board)

Children (815-819): \$3.50 (one able to board on board)

Children (820-824): \$3.50 (one able to board on board)

Children (825-829): \$3.50 (one able to board on board)

Children (830-834): \$3.50 (one able to board on board)

Children (835-839): \$3.50 (one able to board on board)

Children (840-844): \$3.50 (one able to board on board)

Children (845-849): \$3.50 (one able to board on board)

Children (850-854): \$3.50 (one able to board on board)

Children (855-859): \$3.50 (one able to board on board)

Children (860-864): \$3.50 (one able to board on board)

Children (865-869): \$3.50 (one able to board on board)

Children (870-874): \$3.50 (one able to board on board)

Children (875-879): \$3.50 (one able to board on board)

Children (880-884): \$3.50 (one able to board on board)

Children (885-889): \$3.50 (one able to board on board)

Children (890-894): \$3.50 (one able to board on board)

Children (895-899): \$3.50 (one able to board on board)

Children (900-904): \$3.50 (one able to board on board)

Children (905-909): \$3.50 (one able to board on board)

Children (910-914): \$3.50 (one able to board on board)

Children (915-919): \$3.50 (one able to board on board)

Children (920-924): \$3.50 (one able to board on board)

Children (925-929): \$3.50 (one able to board on board)

Children (930-934): \$3.50 (one able to board on board)

Children (935-939): \$3.50 (one able to board on board)

Children (940-944): \$3.50 (one able to board on board)

Children (945-949): \$3.50 (one able to board on board)

Children (950-954): \$3.50 (one able to board on board)

Children (955-959): \$3.50 (one able to board on board)

Children (960-964): \$3.50 (one able to board on board)

Children (965-969): \$3.50 (one able to board on board)

Children (970-974): \$3.50 (one able to board on board)

Children (975-979): \$3.50 (one able to board on board)

Children (980-984): \$3.50 (one able to board on board)

Children (985-989): \$3.50 (one able to board on board)

Children (990-994): \$3.50 (one able to board on board)

Children (995-999): \$3.50 (one able to board on board)

Children (1000-1004): \$3.50 (one able to board on board)

Children (1005-1009): \$3.50 (one able to board on board)

Children (1010-1014): \$3.50 (one able to board on board)

Children (1015-1019): \$3.50 (one able to board on board)

Children (1020-1024): \$3.50 (one able to board on board)

Children (1025-1029): \$3.50 (one able to board on board)

Children (1030-1034): \$3.50 (one able to board on board)

Children (1035-1039): \$3.50 (one able to board on board)

Children (1040-1044): \$3.50 (one able to board on board)

Children (1045-1049): \$3.50 (one able to board on board)

Children (1050-1054): \$3.50 (one able to board on board)

Children (1055-1059): \$3.50 (one able to board on board)

Children (1060-1064): \$3.50 (one able to board on board)

Children (1065-1069): \$3.50 (one able to board on board)

Children (1070-1074): \$3.50 (one able to board on board)

Children (1075-1079): \$3.50 (one able to board on board)

Children (1080-1084): \$3.50 (one able to board on board)

Children (1085-1089): \$3.50 (one able to board on board)

Children (1090-1094): \$3.50 (one able to board on board)

Children (1095-1099): \$3.50 (one able to board on board)

Children (1100-1104): \$3.50 (one able to board on board)

Children (1105-1109): \$3.50 (one able to board on board)

Children (1110-1114): \$3.50 (one able to board on board)

Children (1115-1119): \$3.50 (one able to board on board)

Children (1120-1124): \$3.50 (one able to board on board)

Children (1125-1129): \$3.50 (one able to board on board)

Children (1130-1134): \$3.50 (one able to board on board)

Children (1135-1139): \$3.50 (one able to board on board)

Children (1140-1144): \$3.50 (one able to board on board)

Children (1145-1149): \$3.50 (one able to board on board)

Children (1150-1154): \$3.50 (one able to board on board)

Children (1155-1159): \$3.50 (one able to board on board)

Children (1160-1164): \$3.50 (one able to board on board)

Children (1165-1169): \$3.50 (one able to board on board)

Children (1170-1174): \$3.50 (one able to board on board)

Children (1175-1179): \$3.50 (one able to board on board)

Children (1180-1184): \$3.50 (one able to board on board)

Children (1185-1189): \$3.50 (one able to board on board)

Children (1190-1194): \$3.50 (one able to board on board)

Children (1195-1199): \$3.50 (one able to board on board)

Children (1200-1204): \$3.50 (one able to board on board)

Children (1205-1209): \$3.50 (one able to board on board)

Children (1210-1214): \$3.50 (one able to board on board)

Children (1215-1219): \$3.50 (one able to board on board)

Children (1220-1224): \$3.50 (one able to board on board)

Children (1225-1229): \$3.50 (one able to board on board)

Children (1230-1234): \$3.50 (one able to board on board)

Children (1235-1239): \$3.50 (one able to board on board)

Children (1240-1244): \$3.50 (one able to board on board)

Children (1245-1249): \$3.50 (one able to board on board)

Children (1250-1254): \$3.50 (one able to board on board)

Children (1255-1259): \$3.50 (one able to board on board)

Children (1260-1264): \$3.50 (one able to board on board)

Children (1265-1269): \$3.50 (one able to board on board)

Children (1270-1274): \$3.50 (one able to board on board)

Children (1275-1279): \$3.50 (one able to board on board)

Children (1280-1284): \$3.50 (one able to board on board)

Children (1285-1289): \$3.50 (one able to board on board)

Children (1290-1294): \$3.50 (one able to board on board)

Children (1295-1299): \$3.50 (one able to board on board)

Children (1300-1304): \$3.50 (one able to board on board)

Children (1305-1309): \$3.50 (one able to board on board)

Children (1310-1314): \$3.50 (one able to board on board)

Children (1315-1319): \$3.50 (one able to board on board)

Children (1320-1324): \$3.50 (one able to board on board)

Children (1325-1329): \$3.50 (one able to board on board)

Children (1330-1334): \$3.50 (one able to board on board)

Children (1335-1339): \$3.50 (one able to board on board)

Children (1340-1344): \$3.50 (one able to board on board)

Children (1345-1349): \$3.50 (one able to board on board)

Children (1350-1354): \$3.50 (one able to board on board)

Children (1355-1359): \$3.50 (one able to board on board)

Children (1360-1364): \$3.50 (one able to board on board)

Children (1365-1369): \$3.50 (one able to board on board)

Children (1370-1374): \$3.50 (one able to board on board)

Children (1375-1379): \$3.50 (one able to board on board)

Children (1380-1384): \$3.50 (one able to board on board)

Children (1385-1389): \$3.50 (one able to board on board)

Children (1390-1394): \$3.50 (one able to board on board)

Children (1395-1399): \$3.50 (one able to board on board)

Children (1400-1404): \$3.50 (one able to board on board)

Children (1405-1409): \$3.50 (one able to board on board)

Children (1410-1414): \$3.50 (one able to board on board)

Children (1415-1419): \$3.50 (one able to board on board)

Children (1420-1424): \$3.50 (one able to board on board)

Children (1425-1429): \$3.50 (one able to board on board)

Children (1430-1434): \$3.50 (one able to board on board)

Children (1435-1439): \$3.50 (one able to board on board)

Children (1440-1444): \$3.50 (one able to board on board)

Children (1445-1449): \$3.50 (one able to board on board)

Children (1450-1454): \$3.50 (one able to board on board)

Children (1455-1459): \$3.50 (one able to board on board)

Children (1460-1464): \$3.50 (one able to board on board)

Children (1465-1469): \$3.50 (one able to board on board)

Children (1470-1474): \$3.50 (one able to board on board)

Children (1475-1479): \$3.50 (one able to board on board)

Children (1480-1484): \$3.50 (one able to board on board)

Children (1485-1489): \$3.50 (one able to board on board)

Children (1490-1494): \$3.50 (one able to board on board)

Children (1495-1499): \$3.50 (one able to board on board)

Children (1500-1504): \$3.50 (one able to board on board)

Children (1505-1509): \$3.50 (one able to board on board)

Children (1510-1514): \$3.50 (one able to board on board)

Children (1515-1519): \$3.50 (one able to board on board)

Children (1520-1524): \$3.50 (one able to board on board)

Children (1525-1529): \$3.50 (one able to board on board)

Children (1530-1534): \$3.50 (one able to board on board)

Children (1535-1539): \$3.50 (one able to board on board)

Children (1540-1544): \$3.50 (one able to board on board)

Children (1545-1549): \$3.50 (one able to board on board)

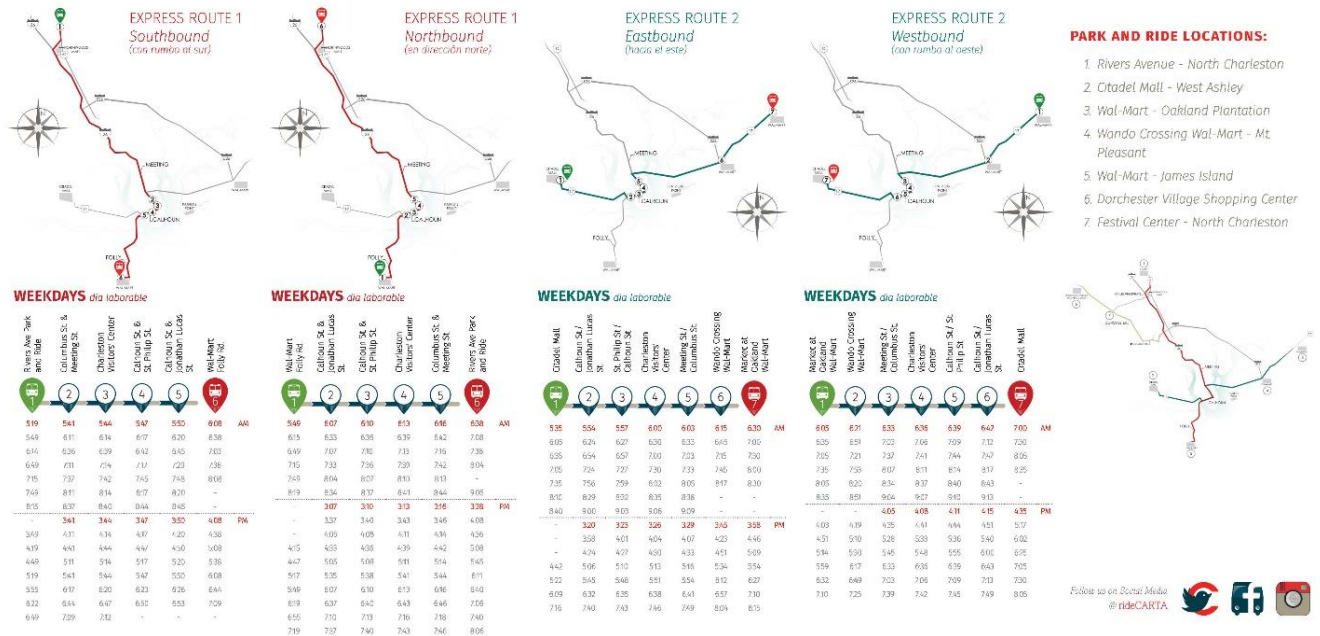
Children (1550-1554): \$3.50 (one able to board on board)

Children (1555-1559): \$3.50 (one able to board on board)

Children (1560-1564): \$3.50 (one able to board on board)

Children (1565-1569): \$3.50 (one able to board on board)

Children (1570-1574): \$3.50 (one able to board on board



Transportation Element Strategies and Time Frames

The Town should undertake the following strategic actions in support of the Goals of this Plan. These implementation strategies will be reviewed a minimum of every five years and updated every ten years from the date of adoption of this Plan.

- T 1. Work with appropriate agencies to investigate how to improve roads within the Town.
- T 2. Consider the impacts of a changing population on the transportation system, including impacts on and from surrounding jurisdictions.
- T 3. Ensure that the provision and use of any transportation system respects the Town's suburban character and natural and cultural resources.
- T 4. Ensure that roads are constructed in a way that promotes safe vehicle passage and pedestrian/bicycle use while providing sufficient drainage.
- T 6. Require traffic impact studies consistent with the Zoning and Land Development Regulations Ordinance.
- T 7. Require that adequate transportation infrastructure be in place prior to, or concurrent with, additional development.
- T 8. Coordinate transportation strategies with growth management and land use strategies by encouraging redevelopment activities that improve existing CARTA bus stops and bicycle facilities.
- T 9. Monitor the status of population evacuation for emergency preparedness for natural or manmade disasters.
- T 10. Support the services provided by CARTA, including promoting additional routes off of Folly Road and supporting the need for additional Park N' Ride accommodations on and off of Folly Road.
- T 11. Transit shelters should be considered depending on the size of new development as determined by the Town and in consultation with public sector transportation agencies.

Chapter 3.8: Community Facilities Element

Community Facilities Element Overview and Purpose and Intent

The South Carolina Local Government Comprehensive Planning Enabling Act of 1994 requires a Community Facilities Element which considers water supply, treatment, and distribution; sewage system and wastewater treatment; solid waste collection and disposal, fire protection, emergency medical services, and general government facilities; education facilities; and libraries and other cultural facilities. This element should contain a detailed documentation of the available resources and goals for future development of utilities, transportation, governmental, and educational facilities. Given this background of knowledge, the Town can properly direct growth in areas that can accommodate it and discourage growth where the infrastructure is not adequate. South Carolina State Law regarding comprehensive plans was amended in 2007 to require that transportation be a stand-alone element in the Comprehensive Plan; therefore, transportation information, needs, goals and strategies are contained in the Transportation Element. The community facilities element must be updated every five years to ensure that the Town has current information.

Community Facilities Element Background and Inventory of Existing Conditions

Many agencies are involved in the provision of public facilities and services. Some of these agencies are outside of the purview of the Town of James Island. While this Plan can establish general strategies for the Town to follow, the actual provision of most services and facilities is managed by outside agencies.

1. Water Supply and Wastewater

Nearly all Town residents have water service from the Charleston Water System and waste water and sanitary service from the James Island Public Service District. The District Office is located on Signal Point Road.

2. Solid Waste Management

The James Island Public Service District provides residential collection services including weekly curbside collection of containerized refuse and once a week pickup of yard debris, man-made and metal materials. Containerized refuse and yard debris are packed into packer trucks, dump trucks, or transfer trailers for transport to the Charleston County Bees Ferry Landfill facility. Per mandate by Charleston County, man-made and metal materials are hauled to the Spring Grove Landfill at Palmetto Commerce Parkway. The increased distance of landfill and transfer station sites necessitates the need for island residents to make a strong effort to reduce, reuse and/or recycle their waste.

Currently, the Solid Waste Services Department serves over 9,000 homes and businesses on James Island. The Solid Waste Services Department runs an operation with a fleet of 22 vehicles, which includes 5 packer trucks, 2 Knuckle-booms (crane-type vehicles), 2 transfer trucks with 4 trailers, 4 front end loaders, 7 dump trucks and 2 pick-up trucks. This department employs 25 employees.

Stacey Desrocher(JIPSD, 6/15/2020)

3. Recycling Services

The Charleston County Environmental Management Department provides biweekly curbside pickup for recycling services. Additionally, the Signal Point Road Convenience Center is a recycling drop site located on James Island.

4. Fire Protection

Fire Protection is provided by the James Island Public Service District. The JIPSD Fire Department has earned a Class 1 Public Protection Classification (PPC) rating by the Insurance Service Office (ISO), which represents exemplary public protection. This translates to a safer environment for residents and could result in lowering insurance premiums. They serve over 10,000 homes and business with four stations strategically located on the island, responding to over 2,000 service requests annually. Currently, the main station on Camp Road is being relocated to a more central location to better serve the residents of James Island. The new facility is under construction at the corner of Prescott Street and Folly Road. Construction began in Summer of 2019 and is expected to be completed in the Winter of 2020/2021. There are two more District fire stations at 78 Plymouth Avenue and 1833 Folly Road. These stations house four engine companies and one ladder truck plus additional reserve and support vehicles. Other specialized capabilities of the department include hazardous materials, confined space entry, trench rescue, auto extrication and high level response. Currently the Fire Department ISO rating is 3. The James Island Public Service District works with the City of Charleston Fire Department, which has a fire station at Fort Johnson Road. This is within the boundary of the Town, but on property annexed to the City of Charleston.

5. Emergency Medical Services

Emergency Medical Services are provided to the citizens of the Town by Charleston County. The station is located outside of the boundaries of the Town, on Folly Road and Signal Point Road. James Island also has a Charleston County EMS response unit (Medic #4) located on Plymouth Road. The James Island Public Service District provides EMS services to augment the County EMS system and to provide more timely response to medical emergencies. First responder calls are answered from County-wide Consolidated Dispatch Center.

6. Law Enforcement

Law Enforcement is provided by the Charleston County Sheriff's Office. The Sheriff's Office maintains a station outside of the boundaries of the Town on Riverland Drive. The Town of James Island has an Intergovernmental Agreement with the Sheriff's Office to contract for additional deputies dedicated to policing the Town. This program is known as the Island Sheriff's Patrol. In addition, the Town has a full-time Charleston County Sheriff's Deputy stationed at Town Hall as of June 2020. Residents also utilize the magistrate's services located in the Riverland Drive complex. An emergency 9-1-1 system is in place countywide to provide dispatch for police, fire, and Emergency Medical Services. For non-emergencies residents may call (843) 743-7200.

7. Medical Care

Charleston County has some of the best medical facilities in the Southeast, including the Medical University of South Carolina and Roper St. Francis Healthcare. Their proximity to the Town, particularly in downtown Charleston, and the recent establishment of the Roper St. Francis facility near the Folly Road and Maybank Highway intersection, makes any additional hospitals in the Town unnecessary. Currently plans have been submitted and are undergoing site plan review for a free-standing Emergency Room, operated by Trident Health, located at 945 Folly Road. In addition, James Island has several medical clinics such as Doctor's Care, as well as numerous medical offices, primary care practitioners, and specialty medicine practices. There are also several veterinary practices located on James Island.

8. Town Government Facilities

Town Hall is located at 1122 Dills Bluff Road. The newly constructed 6,000 square foot facility was completed in July of 2018, accomplishing the Town's long -term goal of moving out of its leased space. The Town Hall administrative building houses all Town departments and has 10 enclosed offices, two conference rooms as well as a flex space for Island Sheriff's deputies to utilize. The Council Chambers, with an adjoining screened-in porch, is a multi-purpose space that can hold 139 people.

The original Intergovernmental Agreement for Public Services for the Town of James Island was an agreement between the Town of James Island and Charleston County that the County will provide the following public services: Building Inspections Services, Revenue Collection, Zoning and Planning and Stormwater Management. Since the Town has grown and become more established, the Intergovernmental Agreement is consistently being revised with more responsibilities and public services being handled by the Town.

In 2019, Charleston County leased the old library space at 1248 Camp Rd. for an educational use to the Town, the James Island Arts and Cultural Center (JIACC). A group of stakeholders have been diligently working to put together a plan for the new space. Representatives from the JI Arts Council, JI History Council, JI Pride, First Baptist Church of James Island, Opportunity Calls Everyone, and Empower our Youth have worked with Town staff and the design team at Liollo to reconfigure the old library space into a new, educational area that will house local art, historic artifacts, and to be a place where our residents and youth can gather for meeting and tutoring space. The new facility is slated to open in 2021.

9. Emergency Preparedness

Emergency Preparedness is a coordinated effort between State, County and the local jurisdictions. The James Island Public Service District provides emergency and natural disaster response to the citizens of James Island, and the James Island Public Service District Fire Chief is designated as the Emergency Management Designee. During an emergency, the Mayor will participate as a member of the Emergency Council at the new

Charleston County Emergency Operations Center (EOC), located on the Palmetto Commerce Parkway. While Charleston County Emergency Management coordinates the efforts of all local jurisdictions, and the Town is responsible for mitigating damage following a natural disaster, the Town has its own Emergency Preparedness Plan which is currently updated annually, and budgets funds for disaster relief. The Town operates its own MEOC (Municipal Emergency Operations Center) during emergency events and coordinates preparation, reaction, and recovery efforts in the Town. The Town partners with the City of Charleston on sandbag operations for the Island. The Town also sponsors various training activities for residents and staff including CPR and First Aid classes. Because James Island is an evacuation zone during a hurricane event, there are no shelters located on the Island. There are, however, fifteen CARTA emergency shelter pick-up locations that will transport residents to a shelter should an evacuation order be mandated.

10. Public Libraries

The Baxter-Patrick James Island Branch of the Charleston County Library System is located at 1858 S. Grimball Road. The new 20,000 square foot facility was opened in November of 2019 and includes features such as a 100-Seat Auditorium, a study room, Self-Check Kiosks and Automated Materials Handling, a Digital Media (Recording & Editing) Room, Digital Preservation Equipment, DJ Station with Turntables, Creative Studios/Makerspace equipped with several tools including sewing machines, a Cricut, art materials and more, a Storytime Room, Teen Lounge with Gaming Room, Outdoor Reading Areas, a Cultural Path and Genealogy Corner and a Learning (Computer) Lab.

11. Parks and Recreation Services

Recreational facilities are an asset to any residential community. Public spaces such as parks, playgrounds or other community areas are important to the health of a community. It is important to acquire land for these sites before the area is completely developed. Parks available for residents of the Town are James Island County Park, Dock Street Park, Melton Peter Demetre Park, Stephen Washington Park, and Pinckney Park). Some of these parks are in the corporate limits of the City of Charleston on James Island. Dock Street Park & Pinckney Park are owned and maintained by the Town of James Island. Dock Street Park is located at the end of Patterson Avenue and boasts mature live oak trees, a picnic area, a small play area, and a fishing dock overlooking Charleston Harbor. Pinckney Park was purchased with Charleston County Greenbelt funds in 2015 and is a total of 7.37 acres of beautiful land with majestic trees situated on a tributary of Parrot Creek at the end of Fort Johnson Road. Named after Simeon Pinckney who was born a slave and served in the U.S. Colored Infantry during the Civil War, the Town purchased 7 acres of the Pinckney homestead after a series of public workshops and input, for use as a public park. Phase I of Pinckney was completed in the spring of 2019 and included a pervious parking area, walking trails, playground equipment and signage. The Town completed Phase II of the park in the summer of 2020, which includes a screened-in picnic shelter with attached restroom facilities and water fountains, and an additional trail leading to the water. Brantley Park (scheduled to open sometime after the fall of 2020), was another Charleston County Greenbelt Funds purchase, with

coordination from the City of Charleston. Brantley Park will be located on a .46-acre parcel at the corner of Folly Road and Brantley Drive. The site includes majestic grand oak trees, a dock at the end of a small creek and beautiful marsh views towards Ellis Creek. There are also future plans to add a watercraft launching area to Brantley Park in the future. The James Island Recreation Complex includes a pool, gymnasium and ball fields located on James Island within the corporate boundaries of the City of Charleston. The complex is owned and operated by the City of Charleston, however Town residents may participate. The Town has adopted a James Island Youth Sports Program which is an intergovernmental agreement with the City of Charleston which allows Town residents to participate at the reduced City rate and the Town reimburses the City for this expense. Other public recreational facilities on James Island include the Maybank Tennis Center on Houghton Drive, Plymouth Park on Plymouth Avenue (includes public boat ramp), and the Charleston Municipal Golf Course on Maybank Highway. The Municipal Golf Course completed a \$3 million restoration in 2020, which included restoring features to their original beauty, incorporating the lovely environmental surroundings and alleviating drainage and flooding issues for the neighbors and the course itself. The course had an Opening Day on December 9, 2020.

In 2016, Charleston County adopted a second half cent sales tax, and with that the Town will continue to receive funding to help preserve additional greenspace on James Island. Other ways James Island has preserved greenspace is by utilizing FEMA hazard mitigation funds, and in 2020 purchased a repeat flood property in the Clearview neighborhood that will be preserved and restored as a floodplain in perpetuity.

12. Educational Facilities

The Town of James Island is in District 3 of the Charleston County School District (CCSD). The public schools within the boundaries of the Town are: Stiles Point Elementary, Camp Road Middle School, and James Island Charter High School. The former James Island Middle and Fort Johnson Middle have merged into the new Camp Road Middle School that was completed in the Fall of 2020. CCSD plans on using the former James Island Middle School as “flex space” for the district with a possible permanent use being an early education center, while currently (for the 2020-2021 school year) housing Mitchell Math and Science Elementary School while their downtown campus completes renovations. Murray Lasaine Montessori, James Island Elementary, and Harbor View Elementary are also located in the CCSD on James Island. The area presently has several private schools: James Island Christian School, Nativity School, First Baptist Upper School, O’Quinn School, and Charleston Acceleration Academy. There are also several private daycares and preschools on the Island.

13. Roads, Sidewalks and Drainage

Roads are named and addressed through coordination with the U.S. Postal Service, the Charleston County Zoning and Planning Department, and Charleston County 911.

The Town has an Intergovernmental Agreement with Charleston County to provide routine maintenance services up to a certain amount designated each budget year, as well as provide stormwater utility services. The primary and secondary roads in the Town are under SCDOT jurisdiction, which repairs and maintains them. Many neighborhood streets are also under SCDOT jurisdiction, however many are under the jurisdiction of the Town. Town roads are maintained by Charleston County or are private roads. Current levels of congestion suggest that improvements on many primary and secondary roads are desirable. Improvements were undertaken for Harbor View Road, for the corner of Folly Road and Camp Road, and a traffic signal was installed at the intersection of Camp Road and Dills Bluff Road. The Town is working towards paving dirt roads that still exist in the Town at the request of the residents. Ben Road, Jeffrey Road and Lemontree Road were paved in 2015. The Rembert Road paving project was completed in June of 2019. Future planned road projects include a traffic circle at Fort Johnson Road and Camp Road, a turn lane and traffic light constructed on Fort Johnson Road at Secessionville Road, a “dog bone” traffic circle at Riverland Drive and Central Park Road, and the traffic circle at Riverland Drive and Camp Road is under construction as of June 2020.

The Town is always working towards a complete sidewalk network. Completed sidewalks include on Camp Road from Fort Johnson Road to Folly Road, Fort Johnson Road from SCDNR to Folly Road, Dills Bluff Road from Fort Johnson Road to Seaside Lane, Seaside Lane from Fort Johnson Road to Dills Bluff Road, Quail Drive from Harborview Road to the JI Recreation Center, both sides of Harbor View Road from North Shore Drive to Fort Johnson Road and Foxcroft Road from Stillwater Drive to Godber Street. Planned sidewalks include Regatta Road, Lighthouse Boulevard, Camp Road from Folly Road to James Island County Park, Dills Bluff Road from Seaside Lane to Fort Sumter Drive, Fort Sumter Drive from Dills Bluff Road to Harborview Road Winborn Drive from Dills Bluff Road to Quail Drive, and along Quail Drive to the JI Recreation Center.

Most neighborhoods do not have sidewalks.

Additional Community Assistance Services

James Island Outreach

In coordination with area public and private human services agencies, James Island Outreach (JIO), through volunteers and a paid part-time professional director, provides crisis relief and ongoing assistance in the areas of emergency food, medicine, and utility assistance, as well as information, referrals, and GED classes. JIO is a non-profit, tax exempt agency. It is supported through donations of time, food, and funds by area churches, businesses, and individuals. The activities of JIO are governed by a local board of directors made up of supporting church representatives and concerned citizens of the community.

Blessing Boxes

The goal of The Lowcountry Blessing Box Project is to place and maintain Blessing boxes around the Lowcountry. Blessing boxes are stocked with non-perishable food items, basic toiletries, baby supplies, and anything else that might be considered a blessing to someone who finds themselves in need. Items are anonymously donated and

anonymously received. A simple rule applies - Leave what you can, take what you need. There are currently 5 Blessing Boxes on James Island, with one being located in the joint parking lot of Town Hall and First Baptist Church. Other locations include 828 Folly Road (Hair du Jour), Martello Drive (Martin Luther King Church), 413 Fort Johnson Road (by the manatee mailbox), and 1632 Fort Johnson Road (JI Presbyterian Church).

Repair Care

The Town of James Island and Sea Island Habitat for Humanity (SIHH) have partnered up to assist homeowners in need of maintenance help by inviting them to apply for assistance from the Town and SIHH. The Repair Care Program is aimed to help homeowners complete much-needed maintenance projects. Sea Island Habitat for Humanity will assess projects and perform the maintenance work. Critical Home Repair beneficiaries and their families are expected to participate to the extent possible when assessors or construction crews are on site. While similar arrangements exist in other regions, this collaboration is unique to greater Charleston.

Helping Hands

Helping Hands, together with James Island Pride is a group that provides yard work and beautification free of charge to those in our community who are disabled, elderly, or otherwise in need of help in having the dignity of a well-kept yard. They partner with youth groups, churches, and civic organizations for volunteers.

The Town of James Island also has a reimbursement program to help neighborhoods with signage costs when a neighborhood sign needs replacing and updating.

The Town has many ways our citizens can take part and make a difference in important ways. Our Citizen's Advisory Councils offer unique opportunities for residents to help guide the Town's future and they include the Board of Zoning Appeals, Business Development Council, Children's Council, Helping Hands, History Council, James Island Pride, Neighborhood Council, and Planning Commission.

Community Facilities Element Needs

Community Facilities Element needs include, but are not limited to, the following:

- Continuing to evaluate and plan for community facilities and service; and
- Coordinating with the various service providers in the Town.
- Continue monthly stakeholder meetings to address island Stormwater drainage issues.

Community Facilities Element Goal

Community facilities and services will be provided in an equitable, fiscally responsible manner with adequate levels of service and will be coordinated with surrounding jurisdictions and linked to land use planning and development decisions.

Community Facilities Element Strategies and Time Frames:

The Town should undertake the following action strategies to support the Community Facilities Goal. These implementation strategies will be reviewed a minimum of every five years and updated every ten years from the date of adoption of this Plan.

- **Bicycle, Walking & Jogging Paths:**

- CF 1. Explore improving the ability to safely walk and bike on Folly Road, Harbor View Road, and Fort Johnson Road by completing missed connectivity sections of walk/bike paths, bike lanes, and sidewalks.
- CF 2. Explore the potential to extend bicycle lanes as part of the Battery to Beach initiative along the already marked corridor.
- CF 3. Explore the possible connectivity of Folly Road and Fort Johnson Road, especially around the Dr. Julius Thomas Buxton, Jr. Bridge on Harbor View Road, with possibilities including a partnership with the City on installing a bike/ped boardwalk over the creek or bridge expansion/replacement.

- **Parks and Recreation Services:**

- CF 4. Continue to take advantage of Charleston County Greenbelt Funds designated to the Town of James Island and purchase property(s) for a Town park(s).
- CF 5. Coordinate any additional parks and recreation programs with the City of Charleston.
- CF 6. Continue to explore additional cost-sharing services with the City of Charleston.
- CF 7. Find opportunities for preserving greenspace by utilizing federal funds to mitigate repeat flood properties.
- CF 8. Explore opportunities to create and maintain more active recreational facilities for the residents of James Island.
- CF 9. Explore opportunities to create and maintain more active recreational facilities and programs for the youth of James Island.

- **Roads and Drainage:**

- CF 10. Continue to evaluate the need for paving/graveling existing dirt roads that are cost-prohibitive to maintain, with the support of residents,
- CF 11. Continue to maintain all street name and traffic signs on Town neighborhood streets and roads.
- CF 12. Continue to fill potholes and cut vegetation on the right-of way when possible.
- CF 13. Continue to evaluate the need for traffic calming measures in residential neighborhoods based on the road characteristics, traffic data and neighborhood support.

- **Town Government Facilities:**

CF 14. Continue the relationship with Charleston County Sheriff's Office to allow for a full-time deputy to continue to be stationed at Town Hall.

CF 15. Begin planning stages for expansion of additional offices into Town Hall attic space.

CF 16. Explore additional areas where the Town can increase its capacity for its storage needs, given the expected future pattern of growth.

Chapter 3.9: Priority Investment Element

Priority Investment Element Overview and Purpose and Intent

In 2007, the South Carolina Priority Investment Act (The Act) was passed by The General Assembly to address affordable housing and transportation issues and to create a formal process for inter-jurisdictional coordination. The Act requires that two new elements be included in the Comprehensive Plan, the Transportation Element and the Priority Investment Element. The primary goal of The Act is to better coordinate the funding of necessary public facilities with available resources and adjacent jurisdictions through implementation strategies.

As discussed throughout this Plan, the Town of James Island is a suburban residential community with a commensurate level of public services. The Town itself does not provide all of the public facilities and services offered; instead, the majority of these services are provided by outside agencies. However, the Town has a long history of coordinating with adjacent jurisdictions and agencies concerning land use issues and provision of the public services available to balance adequate public facilities/services and protection of the Town's suburban residential character.

The purpose and intent of the Priority Investment Element is to prioritize the implementation actions for the Town over the next ten years through goals and strategies. The main focus of the Town's investment over the next ten years is to continue to coordinate with adjacent jurisdictions and agencies to balance adequate public facilities/services and protection of the Town's suburban residential character.

Priority Investment Element Background and Inventory of Existing Conditions

The elements of this Comprehensive Plan identify where and how growth in the Town of James Island should occur over the next ten years. The strategies contained in those elements are carried forward through the Priority Investment Element. The other Plan elements focus on retaining the Town's suburban residential character and protecting its natural and cultural/historic resources while providing Town residents with employment opportunities, safe, affordable housing, and adequate public facilities and services.

The Town intends to continue to maintain the public facilities and services that are in place today. Likely federal, state, and local funds available for public infrastructure and facilities during the next ten years include, but are not limited to:

- The Town's General Fund;
- The South Carolina Parks and Recreation Development Fund
- FEMA Hazard Mitigation Grant Funds
- Other grant/funding programs for which the Town is eligible.

Priority Investment Element Needs

Priority Investment Element needs include, but are not limited to the following:

- Coordination with adjacent jurisdictions and agencies;
- Maintaining the Town's suburban residential character; and
- Providing adequate public facilities and services.

Priority Investment Element Goal

Adequate public facilities and services will be prioritized through coordination with adjacent and relevant jurisdictions and agencies and will not harm the Town's suburban residential character or its natural, multi-cultural, and historic resources.

Priority Investment Element Strategies and Time Frames

The following strategic actions should be undertaken by the Town in support of the purpose and intent of the Priority Investment Element of the Comprehensive Plan. These implementation strategies will be reviewed a minimum of every five years and updated every ten years from the date of adoption of this Plan.

- PI 1. Continue to coordinate with adjacent jurisdictions and agencies to balance adequate public facilities/services and protection of the Town's suburban residential character as well as its natural, cultural, and historic resources.
- PI 2. Review and update the Zoning and Land Development Regulations Ordinance to ensure these standards reflect the recommendations of the Comprehensive Plan Elements including, but not limited to suburban preservation, development quality, and resource protection.
- PI 3. Improve mobility and quality of life by constructing sidewalks and improving roads.
- PI 4. Continue to implement improvements for Town parks.
- PI 5. Improve participation in the public transportation process through seeking representation on CARTA and dedicating funds for improved benches or shelters.
- PI 6. Improve the inventorying process of drainage easements and other town assets such as stormwater infrastructure with the goal of having a better system to prioritize, plan and budget future improvement projects.

Resources and References

1. BCD Council of Governments, 2009
2. Historical and Architectural Survey Charleston County, South Carolina. Preservation Consultants, 1992
3. U.S. Bureau of the Census: derived from the U.S. Census Bureau; 2000 and 2010 numbers are from the respective Censuses.
4. Geo community. (1990-1995). *James Island Hydrography*. USGS.
5. National Oceanographic and Atmospheric Administration (2011?). *Characterization of the ACE Basin, South Carolina*. NOAA.
6. SCDNR. (1997). *General Soil Map of South Carolina*. Clemson, South Carolina: Clemson University.
7. Waters, K.E. (2003). *Ground-Water Levels in South Carolina*. SCDNR.
8. Sustainable development definition requested by Ed Lohr for discussion at 2/12/15 meeting:

More than one hundred definitions of sustainable development exist, but the most widely used one is from the World Commission on Environment and Development, presented in 1987. It states that sustainable development is “Development that meets the needs of the present without compromising the ability of future generations to meet their own needs.” Sustainable development promotes the idea that social, environmental, and economic progress are all attainable within the limits of our earth’s natural resources. Sustainable development approaches everything in the world as being connected through space, time and quality of life.