

RESOLUTION # 2014-23

A RESOLUTION TO ACCEPT THE REMAINDER OF BEN ROAD INTO THE TOWN OF JAMES ISLAND'S STREET MAINTENANCE SYSTEM FOR MAINTENANCE PURPOSES

WHEREAS, Ben Road is located within the Town of James Island and is an unimproved road;
and

WHEREAS, Ben Road is currently within the Charleston County non-standard road program;
and

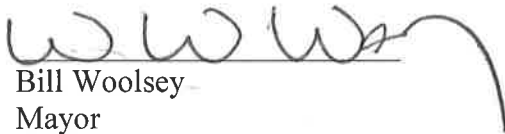
WHEREAS, a portion of Ben Road was already accepted by the Town of James Island on the 15th of February, 2011, through adoption of Resolution #2011-01; and

WHEREAS, it is the desire of the Town of James to accept Ben Road in its entirety; and

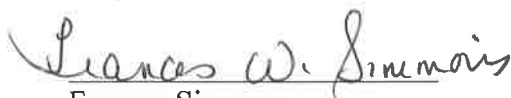
WHEREAS, the Right-of-Way areas are displayed on the plats indicated as Exhibit B and Exhibit C;

NOW, THEREFORE, BE IT RESOLVED THAT:

1. The Town of James Island hereby accepts the areas, as displayed on Exhibit B and C, for maintenance purposes
2. This Resolution becomes effective upon its adoption


Bill Woolsey
Mayor

ATTEST


Frances Simmons
Town Clerk

Adopted and approved this 18th September, 2014

STAMPS

RECORDED
DATE: 03/27/2012 TIME: 3:42:47 PM
BOOK: 1133-11-0011

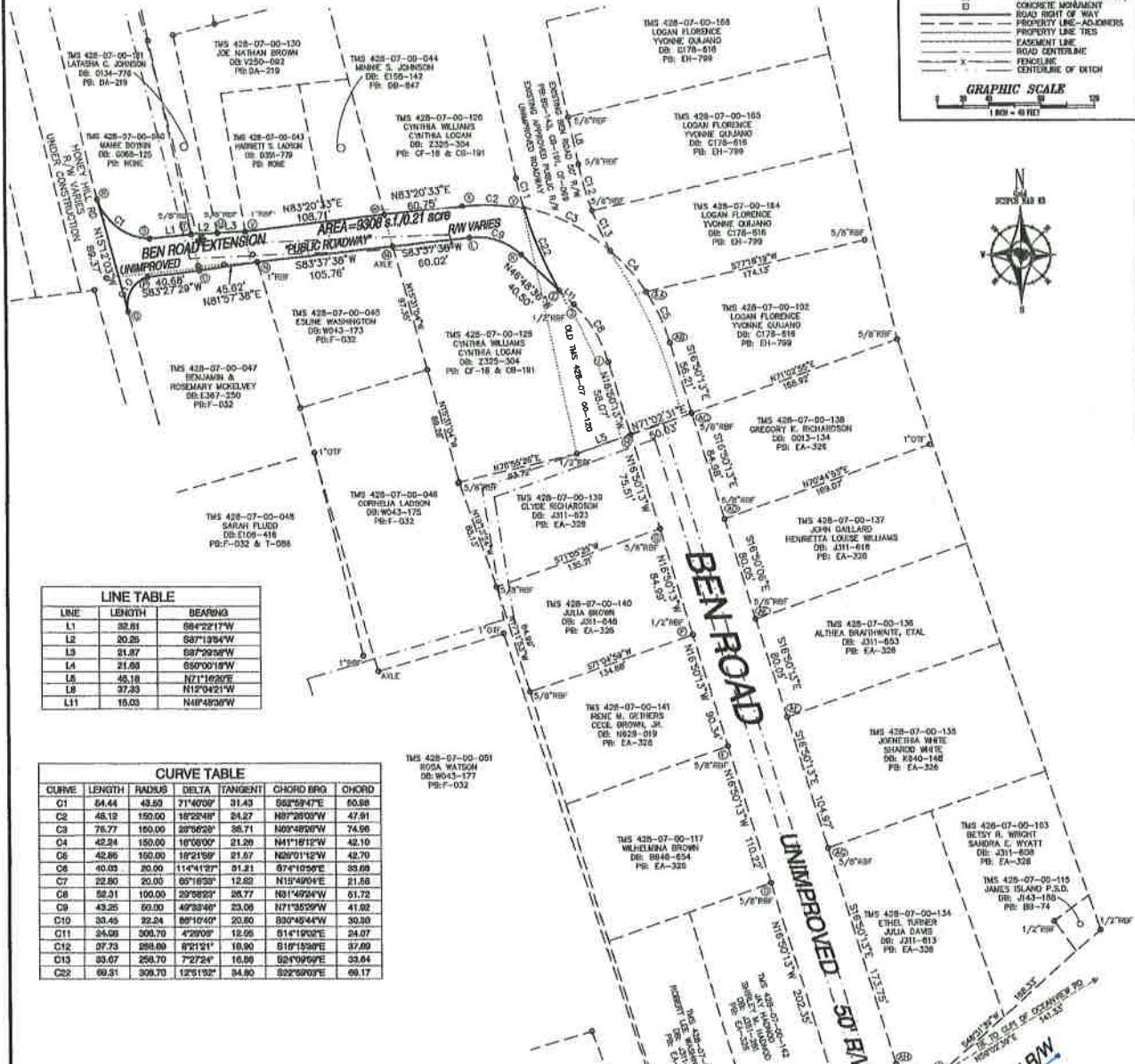
APPROVED PLAT
P.L.L. Acquisition
Director of Planning
Charleston County Planning Department
1400 KING ST. 2ND FLOOR
CHARLESTON, SC 29403
FOR OFFICIAL USE ONLY

NOTES:

- PROPERTY LINES SHOWN ARE BASED UPON THIS SURVEY, ADJACENT SURVEYS, AND THE PUBLIC ROADWAY RECORDS.
- THE PUBLIC ROADWAY RECORDS ARE THE BASIS FOR THE LINES SHOWN ON THIS PLAT.
- THE PUBLIC ROADWAY RECORDS ARE THE BASIS FOR THE LINES SHOWN ON THIS PLAT.
- THE PUBLIC ROADWAY RECORDS ARE THE BASIS FOR THE LINES SHOWN ON THIS PLAT.
- THE PUBLIC ROADWAY RECORDS ARE THE BASIS FOR THE LINES SHOWN ON THIS PLAT.
- THE PUBLIC ROADWAY RECORDS ARE THE BASIS FOR THE LINES SHOWN ON THIS PLAT.
- THE PUBLIC ROADWAY RECORDS ARE THE BASIS FOR THE LINES SHOWN ON THIS PLAT.
- THE PUBLIC ROADWAY RECORDS ARE THE BASIS FOR THE LINES SHOWN ON THIS PLAT.
- THE PUBLIC ROADWAY RECORDS ARE THE BASIS FOR THE LINES SHOWN ON THIS PLAT.
- THE PUBLIC ROADWAY RECORDS ARE THE BASIS FOR THE LINES SHOWN ON THIS PLAT.
- THE PUBLIC ROADWAY RECORDS ARE THE BASIS FOR THE LINES SHOWN ON THIS PLAT.
- THE PUBLIC ROADWAY RECORDS ARE THE BASIS FOR THE LINES SHOWN ON THIS PLAT.
- THE PUBLIC ROADWAY RECORDS ARE THE BASIS FOR THE LINES SHOWN ON THIS PLAT.
- THE PUBLIC ROADWAY RECORDS ARE THE BASIS FOR THE LINES SHOWN ON THIS PLAT.
- THE PUBLIC ROADWAY RECORDS ARE THE BASIS FOR THE LINES SHOWN ON THIS PLAT.
- THE PUBLIC ROADWAY RECORDS ARE THE BASIS FOR THE LINES SHOWN ON THIS PLAT.
- THE PUBLIC ROADWAY RECORDS ARE THE BASIS FOR THE LINES SHOWN ON THIS PLAT.
- THE PUBLIC ROADWAY RECORDS ARE THE BASIS FOR THE LINES SHOWN ON THIS PLAT.
- THE PUBLIC ROADWAY RECORDS ARE THE BASIS FOR THE LINES SHOWN ON THIS PLAT.
- THE PUBLIC ROADWAY RECORDS ARE THE BASIS FOR THE LINES SHOWN ON THIS PLAT.
- THE PUBLIC ROADWAY RECORDS ARE THE BASIS FOR THE LINES SHOWN ON THIS PLAT.
- THE PUBLIC ROADWAY RECORDS ARE THE BASIS FOR THE LINES SHOWN ON THIS PLAT.
- THE PUBLIC ROADWAY RECORDS ARE THE BASIS FOR THE LINES SHOWN ON THIS PLAT.
- THE PUBLIC ROADWAY RECORDS ARE THE BASIS FOR THE LINES SHOWN ON THIS PLAT.
- THE PUBLIC ROADWAY RECORDS ARE THE BASIS FOR THE LINES SHOWN ON THIS PLAT.
- THE PUBLIC ROADWAY RECORDS ARE THE BASIS FOR THE LINES SHOWN ON THIS PLAT.
- THE PUBLIC ROADWAY RECORDS ARE THE BASIS FOR THE LINES SHOWN ON THIS PLAT.
- THE PUBLIC ROADWAY RECORDS ARE THE BASIS FOR THE LINES SHOWN ON THIS PLAT.
- THE PUBLIC ROADWAY RECORDS ARE THE BASIS FOR THE LINES SHOWN ON THIS PLAT.
- THE PUBLIC ROADWAY RECORDS ARE THE BASIS FOR THE LINES SHOWN ON THIS PLAT.
- THE PUBLIC ROADWAY RECORDS ARE THE BASIS FOR THE LINES SHOWN ON THIS PLAT.
- THE PUBLIC ROADWAY RECORDS ARE THE BASIS FOR THE LINES SHOWN ON THIS PLAT.
- THE PUBLIC ROADWAY RECORDS ARE THE BASIS FOR THE LINES SHOWN ON THIS PLAT.
- THE PUBLIC ROADWAY RECORDS ARE THE BASIS FOR THE LINES SHOWN ON THIS PLAT.
- THE PUBLIC ROADWAY RECORDS ARE THE BASIS FOR THE LINES SHOWN ON THIS PLAT.
- THE PUBLIC ROADWAY RECORDS ARE THE BASIS FOR THE LINES SHOWN ON THIS PLAT.
- THE PUBLIC ROADWAY RECORDS ARE THE BASIS FOR THE LINES SHOWN ON THIS PLAT.
- THE PUBLIC ROADWAY RECORDS ARE THE BASIS FOR THE LINES SHOWN ON THIS PLAT.
- THE PUBLIC ROADWAY RECORDS ARE THE BASIS FOR THE LINES SHOWN ON THIS PLAT.
- THE PUBLIC ROADWAY RECORDS ARE THE BASIS FOR THE LINES SHOWN ON THIS PLAT.
- THE PUBLIC ROADWAY RECORDS ARE THE BASIS FOR THE LINES SHOWN ON THIS PLAT.
- THE PUBLIC ROADWAY RECORDS ARE THE BASIS FOR THE LINES SHOWN ON THIS PLAT.
- THE PUBLIC ROADWAY RECORDS ARE THE BASIS FOR THE LINES SHOWN ON THIS PLAT.
- THE PUBLIC ROADWAY RECORDS ARE THE BASIS FOR THE LINES SHOWN ON THIS PLAT.
- THE PUBLIC ROADWAY RECORDS ARE THE BASIS FOR THE LINES SHOWN ON THIS PLAT.
- THE PUBLIC ROADWAY RECORDS ARE THE BASIS FOR THE LINES SHOWN ON THIS PLAT.
- THE PUBLIC ROADWAY RECORDS ARE THE BASIS FOR THE LINES SHOWN ON THIS PLAT.
- THE PUBLIC ROADWAY RECORDS ARE THE BASIS FOR THE LINES SHOWN ON THIS PLAT.
- THE PUBLIC ROADWAY RECORDS ARE THE BASIS FOR THE LINES SHOWN ON THIS PLAT.
- THE PUBLIC ROADWAY RECORDS ARE THE BASIS FOR THE LINES SHOWN ON THIS PLAT.
- THE PUBLIC ROADWAY RECORDS ARE THE BASIS FOR THE LINES SHOWN ON THIS PLAT.
- THE PUBLIC ROADWAY RECORDS ARE THE BASIS FOR THE LINES SHOWN ON THIS PLAT.
- THE PUBLIC ROADWAY RECORDS ARE THE BASIS FOR THE LINES SHOWN ON THIS PLAT.
- THE PUBLIC ROADWAY RECORDS ARE THE BASIS FOR THE LINES SHOWN ON THIS PLAT.
- THE PUBLIC ROADWAY RECORDS ARE THE BASIS FOR THE LINES SHOWN ON THIS PLAT.
- THE PUBLIC ROADWAY RECORDS ARE THE BASIS FOR THE LINES SHOWN ON THIS PLAT.
- THE PUBLIC ROADWAY RECORDS ARE THE BASIS FOR THE LINES SHOWN ON THIS PLAT.
- THE PUBLIC ROADWAY RECORDS ARE THE BASIS FOR THE LINES SHOWN ON THIS PLAT.
- THE PUBLIC ROADWAY RECORDS ARE THE BASIS FOR THE LINES SHOWN ON THIS PLAT.
- THE PUBLIC ROADWAY RECORDS ARE THE BASIS FOR THE LINES SHOWN ON THIS PLAT.
- THE PUBLIC ROADWAY RECORDS ARE THE BASIS FOR THE LINES SHOWN ON THIS PLAT.
- THE PUBLIC ROADWAY RECORDS ARE THE BASIS FOR THE LINES SHOWN ON THIS PLAT.
- THE PUBLIC ROADWAY RECORDS ARE THE BASIS FOR THE LINES SHOWN ON THIS PLAT.
- THE PUBLIC ROADWAY RECORDS ARE THE BASIS FOR THE LINES SHOWN ON THIS PLAT.
- THE PUBLIC ROADWAY RECORDS ARE THE BASIS FOR THE LINES SHOWN ON THIS PLAT.
- THE PUBLIC ROADWAY RECORDS ARE THE BASIS FOR THE LINES SHOWN ON THIS PLAT.
- THE PUBLIC ROADWAY RECORDS ARE THE BASIS FOR THE LINES SHOWN ON THIS PLAT.
- THE PUBLIC ROADWAY RECORDS ARE THE BASIS FOR THE LINES SHOWN ON THIS PLAT.
- THE PUBLIC ROADWAY RECORDS ARE THE BASIS FOR THE LINES SHOWN ON THIS PLAT.
- THE PUBLIC ROADWAY RECORDS ARE THE BASIS FOR THE LINES SHOWN ON THIS PLAT.
- THE PUBLIC ROADWAY RECORDS ARE THE BASIS FOR THE LINES SHOWN ON THIS PLAT.
- THE PUBLIC ROADWAY RECORDS ARE THE BASIS FOR THE LINES SHOWN ON THIS PLAT.
- THE PUBLIC ROADWAY RECORDS ARE THE BASIS FOR THE LINES SHOWN ON THIS PLAT.
- THE PUBLIC ROADWAY RECORDS ARE THE BASIS FOR THE LINES SHOWN ON THIS PLAT.
- THE PUBLIC ROADWAY RECORDS ARE THE BASIS FOR THE LINES SHOWN ON THIS PLAT.
- THE PUBLIC ROADWAY RECORDS ARE THE BASIS FOR THE LINES SHOWN ON THIS PLAT.
- THE PUBLIC ROADWAY RECORDS ARE THE BASIS FOR THE LINES SHOWN ON THIS PLAT.
- THE PUBLIC ROADWAY RECORDS ARE THE BASIS FOR THE LINES SHOWN ON THIS PLAT.
- THE PUBLIC ROADWAY RECORDS ARE THE BASIS FOR THE LINES SHOWN ON THIS PLAT.
-1000

LOCATION MAP

COUNTY NON-STANDARD ROAD PROGRAM



LINE TABLE

LINE	LENGTH	BEARING
L1	32.61	S84°22'17"W
L2	20.26	S87°13'54"W
L3	21.87	S87°20'09"W
L4	21.03	S50°00'10"W
L5	45.18	N71°16'25"E
L6	37.83	N12°04'21"W
L11	16.03	N48°48'30"W

CURVE TABLE

CURVE	LENGTH	RADIUS	DELTA	TANGENT	CHORD BRG	CHORD
C1	54.44	49.59	71°46'09"	31.43	S82°29'47"E	60.58
C2	45.12	150.00	112°25'49"	34.87	N87°28'09"W	47.81
C3	76.77	150.00	207°02'29"	36.71	N00°48'20"W	74.96
C4	42.24	150.00	107°00'00"	21.26	N41°18'12"W	42.10
C5	42.86	100.00	102°15'59"	21.67	N00°01'12"W	42.70
C6	40.03	30.00	114°41'39"	11.21	S74°10'50"E	33.69
C7	22.80	20.00	65°18'53"	12.80	N15°40'01"E	21.58
C8	52.31	100.00	20°08'22"	20.77	N81°40'24"W	61.72
C9	43.25	60.00	49°33'46"	23.06	N71°32'29"W	41.62
C10	33.45	22.24	89°10'40"	20.80	S20°48'44"W	30.30
C11	24.03	300.70	4°29'03"	12.95	S11°19'02"E	24.07
C12	37.73	288.60	8°21'21"	18.90	S10°15'20"E	37.60
C13	33.67	258.70	7°27'24"	16.96	S2°19'59"E	33.64
C22	69.31	309.70	12°51'10"	34.90	S22°50'03"E	69.17

I/WE HEREBY CONFIRM AND ACKNOWLEDGE THAT THE AREA LABELED "PUBLIC ROADWAY" SHOWN HEREON ADJACENT TO MY PROPERTY HAS BEEN DEDICATED AND ACCEPTED FOR PUBLIC USE AND I HEREBY ALSO DEDICATE AND RELEASE ANY PRIVATE INTEREST I MAY HAVE IN THIS AREA LABELED "PUBLIC ROADWAY".

GRANTORS LIST

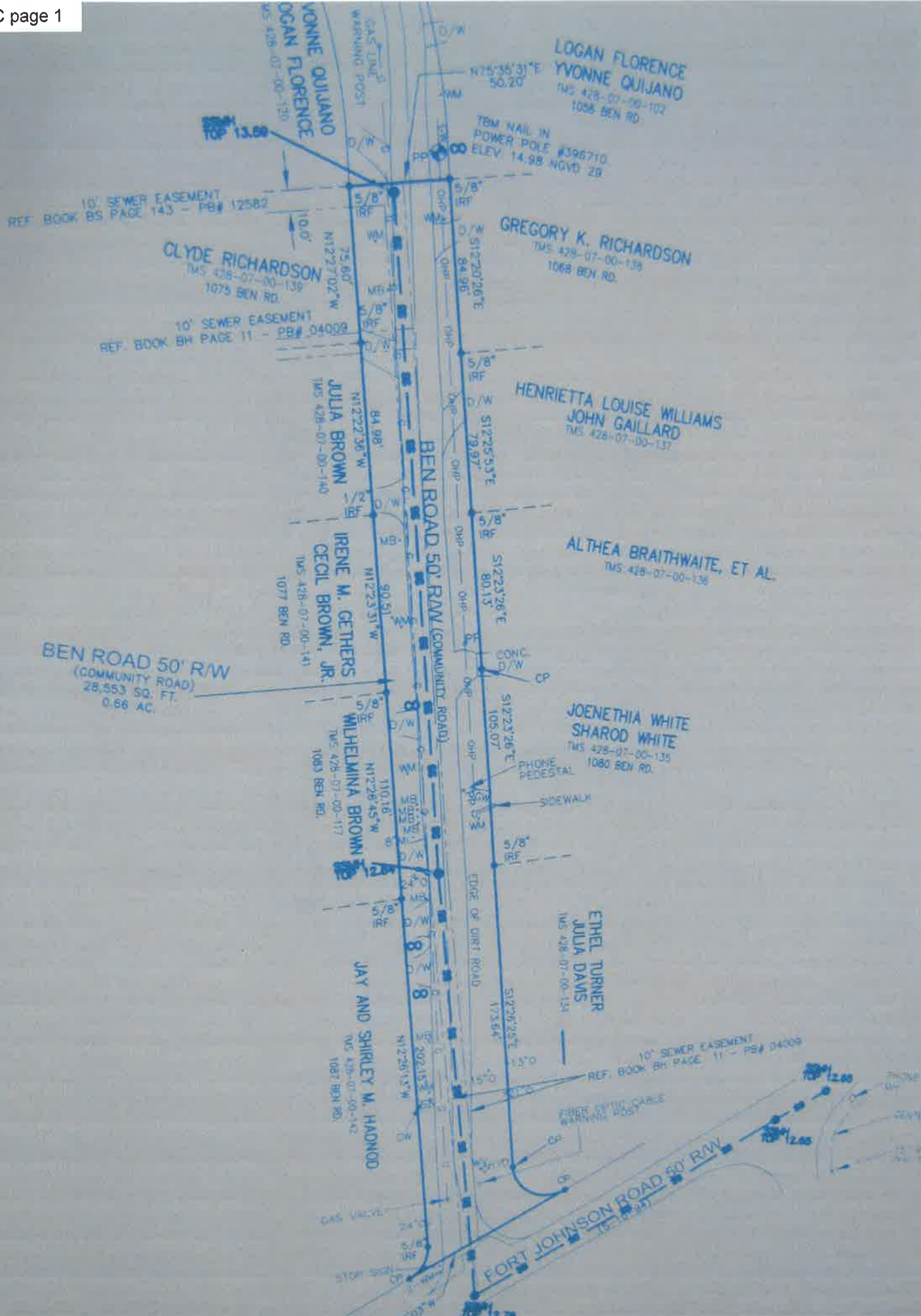
OWNER	TMS #	SIGNATURE
LOGAN FLORENCE	428-07-00-120	[Signature]
YVONNE QUIJANO	428-07-00-120	[Signature]
CYNTHIA WILLIAMS	428-07-00-126	[Signature]
CYNTHIA LOGAN	428-07-00-126	[Signature]
ESLINE WASHINGTON	428-07-00-045	[Signature]
ROSEMARY MCKELVEY	428-07-00-047	[Signature]
BENJAMIN MCKELVEY	428-07-00-047	[Signature]
MAMIE BOYKIN	428-07-00-040	[Signature]
LATASHA C. JOHNSON	428-07-00-131	[Signature]
JOE NATHAN BROWN	428-07-00-130	[Signature]
HARRIETT S. LADSON	428-07-00-043	[Signature]
MINNIE S. JOHNSON	428-07-00-044	[Signature]

* DENOTES THE DESCRIPTION OF THE ROAD AND NOT THE NAME OF THE ROAD.

COUNTY NON-STANDARD ROAD PROGRAM
BEN ROAD EXTENSION
 VARIABLE WIDTH PUBLIC ROADWAY
 LOCATED ON
 JAMES ISLAND/TOWN OF JAMES ISLAND
 CHARLESTON COUNTY, SOUTH CAROLINA
 DATE OF FIELD SURVEY: 09-16-2012

THIS IS NOT A VALID COPY OF THIS DOCUMENT UNLESS BEARING AN ORIGINAL SIGNATURE AND AN APPROVED SEAL OF THE SURVEYOR. I HEREBY CERTIFY THAT TO THE BEST OF MY KNOWLEDGE, INFORMATION AND BELIEF, THIS SURVEY SHOWS TRUTH AND ACCURACY IN ACCORDANCE WITH THE REQUIREMENTS OF THE SURVEYING STATUTES OF SOUTH CAROLINA, AND MEETS OR EXCEEDS THE REQUIREMENTS FOR A CLASS A SURVEY AS SET FORTH THEREIN. ALSO THERE ARE NO UNRECORDED ENCUMBRANCES OR PROCEEDINGS OTHER THAN SHOWN OR STATED.
 Revised: Glen Cheers, P.L.S. S.C.P.S.# 416665

Drawing Prepared By:
CHARLESTON COUNTY PUBLIC WORKS DEPARTMENT
 4040 Bridge View Drive
 North Charleston, S.C. 29405
 Phone: (803) 802-7900 Fax: (803) 802-7901



LOGAN LOGAN
LOGAN WILLIAMS
07-00-156

HATTIE MAE JONES WASHINGTON ET AL
105 BEN RD
105 BEN RD

JERRY WATSON
TMS 428-07-00-188
105A BEN RD

DELORES JANICE WATSON
TMS 428-07-00-198

LOGAN FLORENCE
YVONNE QUIJANO
TMS 428-07-00-154

LOGAN FLORENCE
YVONNE QUIJANO
TMS 428-07-00-157

LOGAN FLORENCE
YVONNE QUIJANO
TMS 428-07-00-155

LOGAN FLORENCE
YVONNE QUIJANO
TMS 428-07-00-153

LOGAN FLORENCE
YVONNE QUIJANO
TMS 428-07-00-164

LOGAN FLORENCE
YVONNE QUIJANO
TMS 428-07-00-152
105B BEN RD

GREGORY K. RICHARDSON
TMS 428-07-00-133
106B BEN RD

CYNTHIA WILLIAMS
AKA THEODOREA CYNTHIA LOGAN
TMS 428-07-00-126

BEN ROAD 50' R/W
(COMMUNITY ROAD)
PREVIOUSLY DEDICATED
REF. BOOK BS PAGE 143 - PB# 12582
REF. BOOK EH PAGE 799 - PB# 19820

10' SEWER EASEMENT
REF. BOOK BH PAGE 11 - PB# 04009
14.02

EDGE OF DIRT ROAD
67.12° 17' 0" 40.0'

YVONNE QUIJANO
LOGAN FLORENCE
TMS 428-07-00-151

CLYDE RICHARDSON
TMS 428-07-00-138
107B BEN RD

10' SEWER EASEMENT
REF. BOOK BH PAGE 11 - PB# 04009

HENRIETTA LOUISE WILLIAMS

